



ORANGE UNIFIED SCHOOL DISTRICT

Measure S Bond Program

May 2022 Monthly Progress Report



PERIOD COVERED:

May 1-31, 2022

FISCAL YEAR

FY 2021-2022

PROGRESS REPORT NO.

PR-059-2022-059

PREPARED BY:

CUMMING
Building Value Through Expertise



TABLE OF CONTENTS

1.0 Executive Summary

- 1.1 Program Summary
- 1.2 Program Highlights/Key Milestones
- 1.3 Look Ahead (next 90 days)

2.0 Project Status Report

- Canyon HS – Science Center
- El Modena HS – Science Center
- Orange HS – Utility Infrastructure (Increment # 1)
- Orange HS – Science Center (Increment # 2)
- Villa Park HS – Interim Housing & Science Center

3.0 Financial Report

- 3.1 Project Cost Estimate
 - Budget vs Actuals with Vendor details per High School
- 3.2 Cash Flow Projections

4.0 Program Schedule Summary

- 4.1 Phase I Schedule Summary
- 4.2 Phase II Schedule Summary



1.0 EXECUTIVE SUMMARY

1.1 Program Summary

Division of State Architects (DSA) approval to establish Phase 1 design criteria completed as follows:

- (Completed) September 22, 2020 - El Modena HS Phase 1 Quad (04-119124)
- (Completed) October 24, 2019 - Villa Park HS New Parking and Drop Off (04-118521).
- (Completed) June 25, 2019 - Orange HS Custom Tensile Fabric Shade Structures (04-118351)
- (Completed) May 2, 2019 - Canyon HS Interim Modular Kitchen (04-118418)
- (Completed) January 31, 2019 - Canyon HS Science Center (04-117300)
- (Completed) November 6, 2018 - El Modena HS Science Center (04-117098)
- (Completed) August 16, 2018 - Villa Park HS Science Center (04-117022)
- (Completed) July 12, 2018 - Orange HS Science Center (Increment # 2) (04-116859)
- (Completed) April 10, 2018 - Orange HS Increment # 1 (Satellite Kitchen) (04-116673.2)
- (Completed) March 1, 2018 - Orange HS Increment #1 (Infrastructure Upgrades, Move Relocatable Buildings, Bus Drop-Off, Restroom Renovation Project) (04-116673.1)
- (Completed) February 7, 2018 - Villa Park HS Interim Housing (DSA Application #04-116788)

Phase 1 construction started (NTP) / completed, as follows:

- Construction Start - June 15, 2018 – Orange HS Site Infrastructure (Increment #1)
 - (Completed) June 28, 2019 – Orange HS Site Infrastructure (Increment #1) (04-116673.1)
- Construction Start January 7, 2019 – Villa Park HS (Interim Housing and Science Center)
 - (Completed) March 1, 2022 – Parking Lot Drop-Off (04-118521)
 - (Completed) March 17, 2022 – Interim Housing (04-116788)
- Construction Start February 18, 2019 – Orange HS Science Center (Increment #2)
 - (Completed) April 8, 2020 – Custom Tensile Fabric Shade Structure (04-118351)
 - (Completed) February 11, 2021 – Orange HS Science Center (04-116859)
- Construction Start April 2, 2019 – El Modena HS Science Center
- Construction Start June 12, 2019 – Canyon HS Interim Housing & Science Center
 - (Completed) August 7, 2020 – Interim Modular Kitchen (04-118418)

Division of State Architects (DSA) approval to establish Phase 2 design criteria as follows:

- Submitted on March 3, 2021 – Villa Park HS Phase 2 (04-119694)
 - (Completed) September 10, 2021.
- Submitted April 23, 2021 – El Modena HS Phase 2 (04-120032)
 - (Completed) May 6, 2022.
- Submitted May 26, 2021 – Orange HS Phase 2 (04-120151)
 - (Completed) January 25, 2022.
- Submitted August 17, 2021 – Canyon HS Phase 2 (04-120410)
 - (Completed) January 14, 2022.



Phase 2 construction started (NTP) / completed, as follows:

- Construction Start - September 23, 2021 – Orange HS Bldg. 300 Admin Swing Space (S2122-001C)
 - (Completed) March 1, 2022 – Orange HS Bldg. 300 Admin Swing Space (S2122-001C)

1.2 Program Highlights/Key Milestones

California Environmental Quality Act (CEQA) Compliance ACHIEVED on Phase 1 (as required by law):

- Villa Park HS Science Center – Notice of Exemption (Board approved on 9/20/18).
- Canyon HS Science Center – Notice of Exemption (Board approved on 7/26/18).
- Orange HS Science Center – Notice of Exemption (Board approved on 3/8/18).
- El Modena HS Science Center – Notice of Exemption (Board approved on 3/8/18).

California Environmental Quality Act (CEQA) Compliance PENDING on Phase 2 (as required by law):

- Orange HS Phase 2 – Based on CEQA review, no new Notice of Exemption needed.
- Villa Park HS Phase 2 – [Notice of Exemption \(approved compliance on 4/14/22 Board agenda\)](#)
- Canyon HS Phase 2 – [Notice of Exemption \(approved compliance on 5/5/22 Board agenda\)](#)
- El Modena HS Phase 2 – [Notice of Exemption \(approved compliance on 5/5/22 Board agenda\)](#)

Phase 2 Measure S Bond Project Development Update:

- As of May 31, 2022, at Canyon HS – Phase 2 (04-120410), originally accepted by DSA on 8/17/21, was design approved by DSA on 1/14/22, working with CannonDesign (Arch), Cordoba (CM) and Purchasing Department to finalize the specification format and put together the bid package.
- As of May 31, 2022, at Orange HS - Phase 2 (04-120151), originally accepted by DSA on 5/26/21, was design approved by DSA on 1/25/22.
 - [On 05/19/22, Purchasing Department conducted a public bid opening for Bid No. S2122-002 Orange HS 2-Story Classroom Student Services Building. There was only one \(1\) bid received from Pinner Construction in the amount of \\$26,928,000. This bid was higher than the advertised bid estimate and the construction estimate received.](#)
- As of May 31, 2022, at Villa Park HS - Phase 2 (04-119694), originally accepted by DSA on 03/03/21, was design approved by DSA on 09/10/2021.
 - Purchasing Department working with team to send out the legal notice for Bid No. S2122-003 Villa Park HS Phase 2 New Classroom Bldg. & 100-200 Mod. [The projected advertisement date is 6/30/22.](#)
- As of May 31, 2022, at El Modena HS - Phase 2 (04-120032), accepted for DSA Plan Review on 4/23/21, [was design approved by DSA on 5/06/2022.](#)



- As of May 31, 2022, working with New Dimension to process the release of retention payment application # 04 (Retention) for the Orange HS Bldg. 300 Swing Space work.

Program Wide Cash Flow Projection / Bond Issuance

- On October 19, 2021, an updated cash flow assessment was produced, which projects the current spend threshold for Phase 1 being achieved in **February 2022**. The Phase II project schedules are based on this projection for Series B Bond sale and use of funds prior to construction activity.
- As of May 31, 2022, the CBO projects the Bond sale for the last week in May; and with a successful sale, cash projected on accounts in June 2022.

Project Achievements:

05/05/22 Board approved [Change Order # 22](#) for Swinerton Builders at Canyon HS in the amount of; Change Order No. 22: [\\$29,080.30 – 0 Calendar Days](#) Additional Contract Time; Description: General Contractor costs based on Four (4) PCO's: Two (2) Unforeseen Conditions, One (1) Owner Requested and One (1) Design Related changes.

05/05/22 Board approved Resolution and Public Hearing, leading to the recordation with the County of Orange Recorders Office, on each of the following: [Notice of Exemption \(NOE\) for El Modena HS Phase II project \(04-120032\)](#), and [Notice of Exemption \(NOE\) for Canyon HS Phase II project \(04-120410\)](#).

05/05/22 Board approved [Service Amendment # 03 from Lionakis](#) proposal dated 3/31/2022, to prepare bid documents and a probable construction cost estimate for the Orange HS Phase 2 (Increment #2) - New Ceilings, Lighting and Audio-Visual systems, and the removal of HVAC and installation, at all locations within the Little Theater along with the addition of a Dressing Room / Restroom area, reflecting a cost of; [\\$162,720.00](#).

05/05/22 Board approved [Change Order # 13](#) for Angeles Contractor, Inc. at Villa Park HS in the amount of; Change Order No. 13: [\\$66,648.18 – 0 Calendar Days](#) Additional Contract Time; Description: General Contractor costs based on Seven (7) PCO's: One (1) Unforeseen Conditions, Two (2) Owner Requested and Four (4) Design Related changes.

05/05/22 Board approved [Change Order # 14](#) for ANGELES at El Modena HS in the amount of; Change Order No. 14: [\\$63,443.75 – 0 Calendar Days](#) Additional Contract Time; Description: General Contractor costs based on Ten (10) PCO's: Five (5) Unforeseen Conditions, Four (4) Owner Requested and One (1) Design Related changes.

As of 05/31/22, processing [payment application # 35](#) (March), for ACI (EMHS) reflecting [99%](#) paid overall completion, reflecting [514 calendar days](#) elapsed.

As of 05/31/22, processing [payment application # 37](#) (March), for ACI (VPHS) reflecting [99%](#) paid overall completion, reflecting [683 calendar days](#) elapsed.

As of 05/31/22, processing [payment application # 34](#) (March) for Swinerton (CHS) reflecting [94%](#) paid overall completion, reflecting [1,051 calendar days](#) elapsed.



1.3 Look Ahead (next 90 days)

Board of Education Agenda

June 2nd

1. MEASURE S SERIES B BOND SALE RESULTS: status update of the Measure S General Obligation Competitive Sale of Series B for \$100,000,000.

Program Wide

- Orange HS Phase II –Reviewing the public bid received to see if we can proceed or cancel and re-bid.
- Orange HS Bldg. 300 Swing Space (Phase II) – New Dimension is awaiting City of Orange recording of the Notice of Completion, to move into the release of retainage.
- Orange HS Bldg. 300 Swing Space (Phase II) – Move Manager working with Orange HS principal on the administrative use of the interim swing space required during the construction of the new administration building (phase 2). Assist with any removal of surplus items and/or hazardous material items from the classrooms and campus.
- El Modena HS Science Center – Angeles Contractor (ACI) is completing HVAC pre-testing with commissioning, all partial occupancy punch list items preparing for substantial completion.
- El Modena HS Science Center – Move Manager continued dialogue with Science Dept., and requesting HAZMAT manifest including location of materials for disposal by CleanEarth contractor.
- El Modena HS Phase II – HED (Architect of Record) received DSA approval of design, however, the construction estimate shows greater than 25% scope creep. Reviewing the design to reduce the construction cost before bidding this project.
- Villa Park HS Interim Housing & Science Center – Angeles completing extended water test for curtain walls and windows, preparing for substantial completion.
- Villa Park HS Phase II – Purchasing Department working with team to send out the legal notice for Bid No. S2122-003 Villa Park HS Phase 2 New Classroom Bldg. & 100-200 Mod. The projected advertisement date is 6/30/22.
- Villa Park HS Phase II –Move Manager to assist the project manager in the delivery/installation of the owner-furnished contractor to install (OFCI) equipment. Complete the removal of the surplus and hazardous material items from the classrooms that are relocating.



- Canyon HS Science Center – Swinerton continuing with new kitchen area grading and concrete prep work and working on completing punch list items for the Science Center building and finishing up these punch list items, while preparing for substantial completion.
- Canyon HS Phase II –Cannon Design (Architect of Record) working with Cordoba (CM) and Purchasing Department to finalize the specification format and put together the bid package.
- Canyon HS Phase II –Move Manager to work with administrative staff/Principal on removing existing surplus furniture and cleanout of existing administrative areas vacated for the need to prep for Ph. 2.



2.0 PROJECT STATUS REPORT



Canyon High School
New STEM Building



EL MODENA SCIENCE CENTER
05.11.2017

Overall View



Orange High School Science Center



ST VILLA PARK HIGH SCHOOL





CANYON HIGH SCHOOL

CANYON HS SCIENCE CENTER

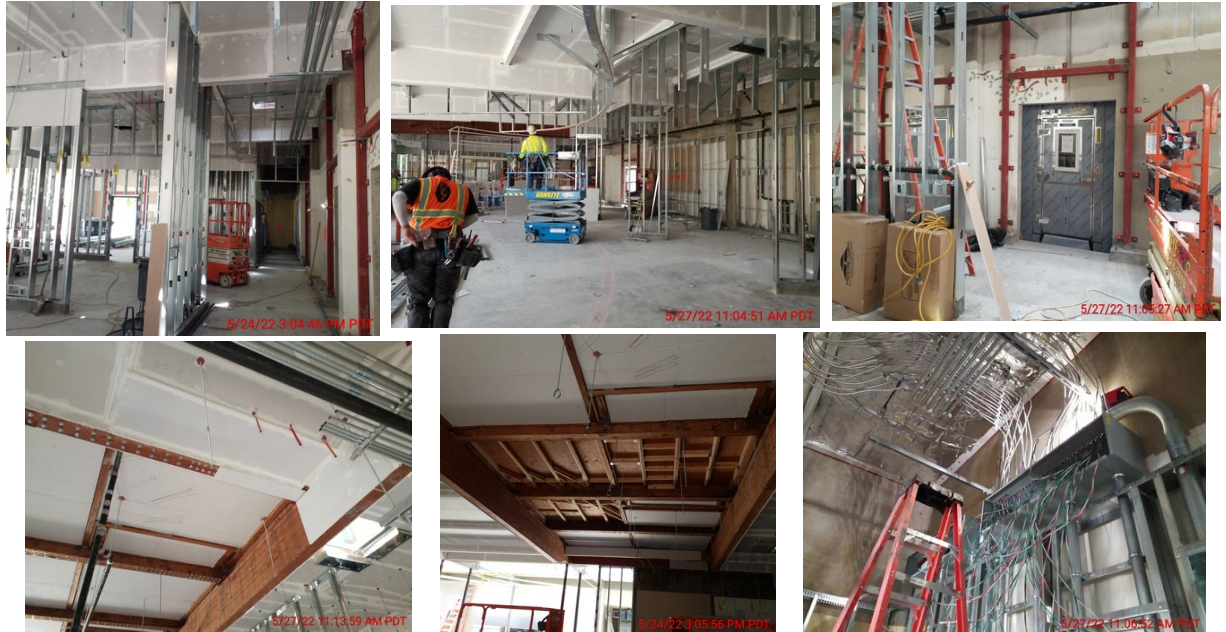
- ✓ 12 Laboratory Rooms
- ✓ 12 General Classrooms
- ✓ Student Services
- ✓ New Food Services

- ✓ New Multi-Purpose Room Entry
- ✓ Parking Lot Improvements
- ✓ Infrastructure Upgrade and Improvements
- ✓ Landscape Improvements

Project Update (Construction):

- As of 05/31/22, Swinerton finishing wall framing, lath and plaster work, preparing floor or the finish coats of epoxy and polished concrete, and other kitchen rough-in work while completing punch list items for the Science Center building while preparing for substantial completion.
- On 05/05/22, Board approved Change Order # 22 for Swinerton Builders at Canyon HS in the amount of; Change Order No. 22: \$29,080.30 – 0 Calendar Days Additional Contract Time; Description: General Contractor costs based on Four (4) PCO’s: Two (2) Unforeseen Conditions, One (1) Owner Requested and One (1) Design Related changes.
- As of 05/31/22, We started a new Move Manager, Julio Esparza on 5/2/22. Julio was introduced to the principal and admin staff and brought up to speed on the site activities. Preparing for Interaction with Kitchen office furniture & locker vendor regarding proposed layout, selection/ordering/delivery schedule. Received Kitchen office furniture and locker proposals and recommended both for approval & processing.
- As of 05/31/22, processing payment application # 34 (March) reflecting 94% paid overall completion, reflecting 1,051 calendar days elapsed.

See Construction Photo’s below:



Left to right: Various Interior work: steel drywall and soffit framing, ceiling wire runs, wire hangars put in place, wood beams having bolts placed, glulam beams being secured, etc.





EL MODENA HS SCIENCE CENTER

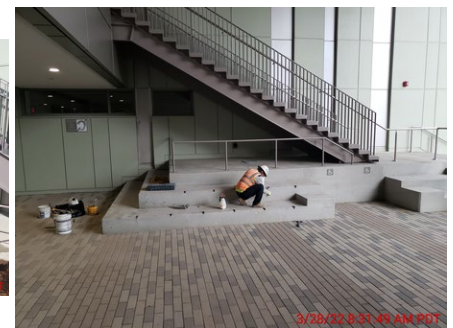
- ✓ 12 Laboratory Rooms
- ✓ 1 General Classrooms
- ✓ 2 Medically Fragile Classrooms

- ✓ Relocation of Campus MDF
- ✓ Technology & Utility Upgrade
- ✓ Landscape Improvements

Project Update (Construction):

- As of 05/31/22, Angeles completing the Fire Alarm system testing, TAB report, electrical system tests, final commissioning sign off, and working on completing punch list items while preparing for substantial completion.
- On 05/05/22, The Board approved Change Order # 14 for ANGELES at El Modena HS in the amount of; Change Order No. 14: \$63,443.75 – 0 Calendar Days Additional Contract Time; Description: General Contractor costs based on Ten (10) PCO's: Five (5) Unforeseen Conditions, Four (4) Owner Requested and One (1) Design Related changes.
- As of 05/31/22, We started a new Move Manager, Julio Esparza on 5/2/22. Julio was introduced to the principal and admin staff and brought up to speed on the site activities.
- As of 05/31/22, processing payment application # 35 (March) reflecting **99%** paid overall completion, reflecting **514 calendar days** elapsed.

[See Construction Photo's below:](#)



Left to right: Roof finish work, Roof ductwork, 2nd floor landing from staircase # 1 to landscape area, under grand staircase # 2 handrails being installed, under staircase # 1 safety handrail being installed.





ORANGE HS SCIENCE CENTER

✓ 12 Laboratory Rooms

✓ 1 General Classrooms

✓ New Panther Pavilion Plaza

✓ 2 Medically Fragile Classrooms

Project Update Increment # 2 – Science Center (Completion):

- As of 05/31/22, all issues have been finalized.

[See Completion Photo's below:](#)



Orange HS – Science Center STEM Building
(Dusk with lights)





VILLA PARK HIGH SCHOOL
SCHOOL OF EXCELLENCE



VILLA PARK HS SCIENCE CENTER

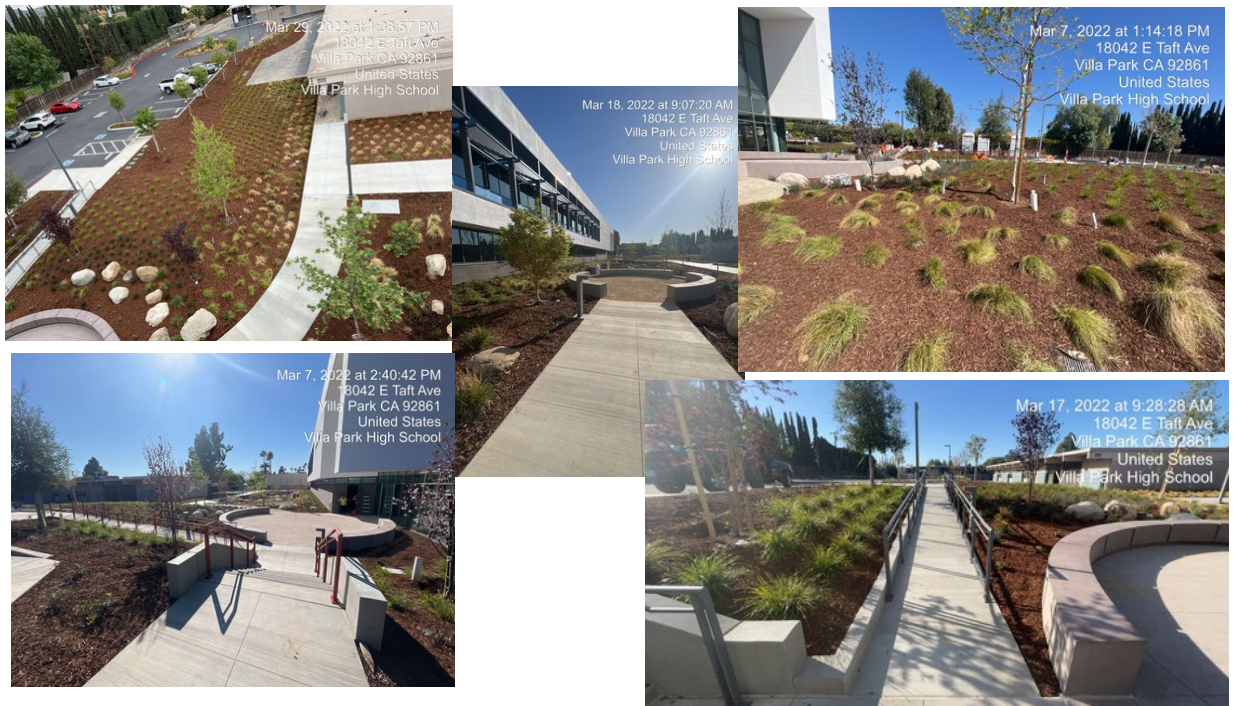
- ✓ 12 Laboratory Rooms
- ✓ 2 General Classrooms
- ✓ 2 Medically Fragile Classrooms

- ✓ Demolish existing building 300
- ✓ Install 10 New Portable Buildings

Project Update (Construction):

- As of 05/31/22, Angeles completing exterior paving, striping, fire lane, turn-about, retention basin, storm water piping and landscape work, and working on completing punch list items while preparing for substantial completion.
- 05/05/22, The Board approved Change Order # 13 for Angeles Contractor, Inc. at Villa Park HS in the amount of; Change Order No. 13: \$66,648.18 – 0 Calendar Days Additional Contract Time; Description: General Contractor costs based on Seven (7) PCO's: One (1) Unforeseen Conditions, Two (2) Owner Requested and Four (4) Design Related changes
- As of 05/31/22, We started a new Move Manager, Julio Esparza on 5/2/22. Julio was introduced to the principal and admin staff and brought up to speed on the site activities
- As of 05/31/22, processing payment application # 37 (March) reflecting **99%** paid overall completion, reflecting **683 calendar days** elapsed.

[See Construction Photo's below:](#)



Left to right: Exterior competed building, landscaping and bio-swale feature installed with exterior stairs and rail.



2.0 PROJECT STATUS REPORT

3.1 Project Cost Estimate

Measure S Bond Program
Financial Report for May 2022

QSS Data thru 5/31/2022

	Budget	Contracted to Date	Expended to Date	Quarterly Expense Apr '22 - Jun '22	% Expended
PROGRAM					
Phase 1 - HS Science Center	\$204,400,578	\$167,381,450	\$159,534,648	\$829,271	78.05%
Phase 2	\$90,875,303	\$10,274,504	\$6,359,966	\$98,762	7.00%
TOTAL	\$295,275,882	\$177,655,954	\$165,894,613	\$928,032	56.18%
Canyon High School					
Phase 1 - HS Science Center	\$68,514,643	\$53,456,859	\$48,939,606	\$393,453	71.43%
Phase 2	\$5,927,142	\$1,493,081	\$848,582	\$14,882	14.32%
TOTAL	\$74,441,785	\$54,949,940	\$49,788,188	\$408,335	66.88%
El Modena High School					
Phase 1 - HS Science Center	\$40,399,991	\$36,682,087	\$35,138,766	\$326,449	86.98%
Phase 2	\$33,181,205	\$3,073,874	\$1,961,720	\$20,636	5.91%
TOTAL	\$73,581,196	\$39,755,961	\$37,100,486	\$347,085	50.42%
Orange High School					
Phase 1 - HS Science Center	\$51,239,678	\$42,390,542	\$42,091,298	\$8,778	82.15%
Phase 2	\$22,310,175	\$2,670,385	\$1,703,698	\$44,611	7.64%
TOTAL	\$73,549,853	\$45,060,927	\$43,794,996	\$53,389	59.54%
Villa Park High School					
Phase 1 - HS Science Center	\$44,246,267	\$34,851,961	\$33,364,977	\$100,591	75.41%
Phase 2	\$29,456,782	\$3,037,165	\$1,845,966	\$18,632	6.27%
TOTAL	\$73,703,048	\$37,889,126	\$35,210,943	\$119,223	47.77%
Added in October 2021 Interest Earned FY2019/2020					
	Budget			Expended	
Canyon High School	\$1,101,651			\$32,883	
El Modena High School	\$634,101			\$18,817	
Orange High School	\$587,274			\$17,282	
Villa Park High School	\$549,500			\$16,351	
TOTAL	\$2,872,526			\$85,333	
Added in October 2021 Interest Earned FY2020/2021					
	Budget			Expended	
Canyon High School	\$373,853			\$26,225	
El Modena High School	\$174,098			\$11,963	
Orange High School	\$96,615			\$6,482	
Villa Park High School	\$169,484			\$11,711	
TOTAL	\$814,049			\$56,381	
Transferred Funds					
	Budget				
Canyon High School (From)	-\$300,000				
Villa Park High School (To)	\$300,000				



Measure S Bond Program
Financial Report for May 2022
Budget vs Actuals by School and Budget Category with Vendor Detail

QSS Data thru 5/31/2022

	Budget	Contracted to Date	Expended to Date	Quarterly Expense Apr '22 - Jun '22	% Expended
Canyon High School					
390-9520 Canyon HS Science Center (DSA 04-117300)					
1. Design Cost					
1.01 Architect					
UNCOMMITTED	\$13,600	\$0	\$0	\$0	
GKKWORKS CANNON DESIGN	\$3,122,050	\$3,122,050	\$3,087,465	\$36,157	98.89%
LIONAKIS	\$14,058	\$14,058	\$14,058	\$0	100.00%
	\$3,149,708	\$3,136,108	\$3,101,523	\$36,157	98.47%
2. Construction Cost					
2.01 Construction					
UNCOMMITTED	\$76,095	\$0	\$0	\$0	
SWINERTON BUILDERS	\$40,058,126	\$40,058,126	\$36,935,831	\$145,464	92.21%
	\$40,134,221	\$40,058,126	\$36,935,831	\$145,464	92.03%
2.02 OFCI & Other Construction					
UNCOMMITTED	\$237,665	\$0	\$0	\$0	
ACCO ENGINEERED SYSTEMS INC	\$236,785	\$236,785	\$236,785	\$0	100.00%
AMERICAN REPROGRAPHICS CO LLC	\$1,026	\$1,026	\$0	\$0	0.00%
ANIXTER	\$5,092	\$5,092	\$0	\$0	0.00%
CDW GOVERNMENT INC	\$82,553	\$82,553	\$82,283	\$0	99.67%
CITY OF ANAHEIM - ELECTRICAL ENGINEERING DIV	\$91,340	\$91,340	\$91,340	\$0	100.00%
DEVELOPMENT GROUP INC	\$100,596	\$100,596	\$94,646	\$568	94.09%
FLINN SCIENTIFIC INC	\$9,067	\$9,067	\$9,067	\$0	100.00%
INTER-PACIFIC INC	\$15,173	\$15,173	\$12,869	\$0	84.81%
THOMPSON ENGINEERING	\$22,792	\$22,792	\$0	\$0	0.00%
TURTLE STORAGE dba AMERICAN BICYCLE CO	\$7,597	\$7,597	\$7,597	\$0	100.00%
VWR INTERNATIONAL LLC	\$16,691	\$16,691	\$16,691	\$0	100.00%
WW GRAINGER INC	\$1,039	\$1,039	\$1,039	\$0	100.00%
	\$827,415	\$589,750	\$552,316	\$568	66.75%
3. Program and Construction Management					
3.01 Program Management Fees					
UNCOMMITTED	\$838,835	\$0	\$0	\$0	
CUMMING CONSTRUCTION MGMT INC	\$1,362,122	\$2,200,957	\$1,323,950	\$12,510	97.20%
	\$2,200,957	\$2,200,957	\$1,323,950	\$12,510	60.15%
3.02 Construction Management Fees					
UNCOMMITTED	\$3,429	\$0	\$0	\$0	
CORDOBA CORPORATION	\$87,508	\$87,508	\$87,479	\$0	99.97%
GAFCON INC	\$3,005,579	\$3,005,579	\$2,832,953	\$124,447	94.26%
	\$3,096,516	\$3,093,087	\$2,920,432	\$124,447	94.31%



Measure S Bond Program
Financial Report for May 2022
Budget vs Actuals by School and Budget Category with Vendor Detail

QSS Data thru 5/31/2022

	Budget	Contracted to Date	Expended to Date	Quarterly Expense Apr '22 - Jun '22	% Expended
4. Construction Support Costs					
4.02 Title, Environmental, Stormwater Management					
UNCOMMITTED	\$48,965	\$0	\$0	\$0	
CHICAGO TITLE COMPANY	\$750	\$750	\$750	\$0	100.00%
CITY OF ANAHEIM	\$2,524	\$2,524	\$2,524	\$0	100.00%
CITY OF ANAHEIM - WATER	\$3,082	\$3,082	\$3,082	\$0	100.00%
COUNTY OF ORANGE - ENVIRONMENTAL HEALTH	\$1,615	\$1,615	\$1,615	\$0	100.00%
ENVIRONMENTAL AUDIT INC	\$50,800	\$50,800	\$21,375	\$0	42.08%
OUSD COST OF INTEREST DISTRIBUTION	\$1	\$1	\$1	\$0	100.00%
STATE WATER RESOURCES CONTROL BOARD (SWRCB)	\$756	\$756	\$756	\$756	100.00%
	\$108,493	\$59,527	\$30,102	\$756	27.75%
4.03 Commissioning					
UNCOMMITTED	\$9,841	\$0	\$0	\$0	
P2S ENGINEERING INC	\$62,602	\$62,602	\$51,007	\$9,065	81.48%
	\$72,443	\$62,602	\$51,007	\$9,065	70.41%
4.05 DSA Review Fees					
UNCOMMITTED	\$76,626	\$0	\$0	\$0	
DIVISION OF STATE ARCHITECT	\$504,370	\$504,370	\$504,370	\$0	100.00%
	\$580,996	\$504,370	\$504,370	\$0	86.81%
4.06 Postage, Printing & Advertising					
UNCOMMITTED	\$59,535	\$0	\$0	\$0	
AMERICAN REPROGRAPHICS CO LLC	\$13,857	\$13,857	\$10,950	\$0	79.02%
SOUTHERN CALIFORNIA NEWS GROUP	\$2,605	\$2,605	\$2,605	\$0	100.00%
	\$75,997	\$16,462	\$13,555	\$0	17.84%
4.07 DSA Inspection (IOR)					
UNCOMMITTED	\$139,851	\$0	\$0	\$0	
KNOWLAND CONSTRUCTION SERVICES	\$454,016	\$454,016	\$403,480	\$28,864	88.87%
	\$593,867	\$454,016	\$403,480	\$28,864	67.94%
4.08 DSA Construction Phase Testing (LOR)					
UNCOMMITTED	\$84,876	\$0	\$0	\$0	
AMERICAN ENGINEERING LABORATORIES INC	\$562,995	\$562,995	\$516,944	\$17,940	91.82%
	\$647,871	\$562,995	\$516,944	\$17,940	79.79%
4.09 Relocation					
UNCOMMITTED	\$4,631	\$0	\$0	\$0	
Beltmann Group, Inc.	\$14,169	\$14,169	\$14,169	\$0	100.00%
NATIONAL CONSTRUCTION RENTALS	\$400	\$400	\$400	\$400	100.00%
REDBIRD FLIGHT SIMULATIONS	\$3,900	\$3,900	\$3,900	\$0	100.00%
ULINE INC	\$1,900	\$1,900	\$1,284	\$0	67.59%
	\$25,000	\$20,369	\$19,753	\$400	79.01%
4.10 Labor Compliance					



Measure S Bond Program
Financial Report for May 2022
Budget vs Actuals by School and Budget Category with Vendor Detail

QSS Data thru 5/31/2022

	Budget	Contracted to Date	Expended to Date	Quarterly Expense Apr '22 - Jun '22	% Expended
UNCOMMITTED	\$47,498	\$0	\$0	\$0	
	\$47,498	\$0	\$0	\$0	0.00%
4.11 Preliminary Testing (Hazmat, Topo, Geo, etc)					
UNCOMMITTED	\$229,637	\$0	\$0	\$0	
C BELOW SUBSURFACE IMAGING (Subsurface Investigation)	\$8,445	\$8,445	\$8,445	\$0	100.00%
CALIFORNIA GEOLOGICAL SURVEY (Geology and Seismology Review)	\$3,600	\$3,600	\$3,600	\$0	100.00%
ENVIRONMENTAL NETWORK CORPORATION	\$30,155	\$30,155	\$20,193	\$0	66.96%
HARRINGTON GEOTECHNICAL ENGINEERING INC (Geotechnical Soils Investigation)	\$13,500	\$13,500	\$13,500	\$0	100.00%
PROVENCHER, GEORGE (dba PROVO ENGINEERING)	\$720	\$720	\$720	\$0	100.00%
RMA GROUP (dba SITESCAN)	\$26,103	\$26,103	\$26,103	\$0	100.00%
XICOTENCATL ENRIQUE SALAZAR	\$20,100	\$20,100	\$20,100	\$0	100.00%
	\$332,260	\$102,623	\$92,660	\$0	27.89%
4.12 Utility Connection Fees (Local Permits)					
UNCOMMITTED	\$173,033	\$0	\$0	\$0	
AT&T	\$5,302	\$5,302	\$5,302	\$0	100.00%
CITY OF ANAHEIM - ELECTRICAL ENGINEERING DIV	\$2,756	\$2,756	\$2,756	\$0	100.00%
CROWN CASTLE INTERNATIONAL	\$6,455	\$6,455	\$6,455	\$0	100.00%
SOUTHERN CALIFORNIA GAS CO	\$2,445	\$2,445	\$2,445	\$0	100.00%
	\$189,991	\$16,958	\$16,958	\$0	8.93%
4.13 FF&E (Laboratory Tables and Chairs, other)					
UNCOMMITTED	\$175,844	\$0	\$0	\$0	
AMS.NET	\$14,485	\$14,485	\$14,485	\$0	100.00%
ARROW RESTAURANT EQUIPMENT	\$11,559	\$11,559	\$11,559	\$0	100.00%
CAROLINA BIOLOGICAL SUPPLY	\$18,896	\$18,896	\$1,869	\$0	9.89%
FISHER SCIENCE EDUCATION	\$36,200	\$36,200	\$33,320	\$0	92.04%
FLINN SCIENTIFIC INC	\$8,028	\$8,028	\$8,028	\$0	100.00%
SIERRA SCHOOL EQUIPMENT COMPANY	\$875,850	\$875,850	\$850,774	\$17,283	97.14%
VWR INTERNATIONAL LLC	\$9,486	\$9,486	\$9,486	\$0	100.00%
WW GRAINGER INC	\$1,932	\$1,932	\$1,881	\$0	97.32%
	\$1,152,280	\$976,436	\$931,401	\$17,283	80.83%
4.14 Legal Counsel					
UNCOMMITTED	\$94,996	\$0	\$0	\$0	
	\$94,996	\$0	\$0	\$0	0.00%
5. Contingency					
5.01 Construction Contingency					
UNCOMMITTED	\$1,052,222	\$0	\$0	\$0	
	\$1,052,222	\$0	\$0	\$0	0.00%
5.02 Project Contingency					
UNCOMMITTED	\$11,825,928	\$0	\$0	\$0	



Measure S Bond Program
Financial Report for May 2022
Budget vs Actuals by School and Budget Category with Vendor Detail

QSS Data thru 5/31/2022

	Budget	Contracted to Date	Expended to Date	Quarterly Expense Apr '22 - Jun '22	% Expended
	\$11,825,928	\$0	\$0	\$0	0.00%
Total 390-9520 Canyon HS Science Center (DSA 04-117300)	\$66,208,659	\$51,854,386	\$47,414,282	\$393,453	71.61%
390-9520 Canyon HS Unallocated Funds F21					
4. Construction Support Costs					
4.15 Miscellaneous Fees					
UNCOMMITTED	\$0	\$0	\$0	\$0	
OUSD COST OF INTEREST DISTRIBUTION	\$96,044	\$96,044	\$96,044	\$0	100.00%
	\$96,044	\$96,044	\$96,044	\$0	100.00%
5. Program Reserve					
5.03 Interest Earned - Reserve					
UNCOMMITTED	\$2,345,740	\$0	\$0	\$0	
	\$2,345,740	\$0	\$0	\$0	0.00%
Total 390-9520 Canyon HS Unallocated Funds F21	\$2,441,785	\$96,044	\$96,044	\$0	3.93%
390-0000 Canyon HS IP Surveillance Camera and Systems					
4. Construction Support Costs					
4.13 FF&E (Laboratory Tables and Chairs, other)					
UNCOMMITTED	\$0	\$0	\$0	\$0	
CDW GOVERNMENT INC	\$29,337	\$29,337	\$29,337	\$0	100.00%
DIGITAL NETWORKS GROUP INC (F/I IP Camera Software)	\$7,093	\$7,093	\$7,093	\$0	100.00%
INTER-PACIFIC INC	\$18,163	\$18,163	\$18,163	\$0	100.00%
	\$54,593	\$54,593	\$54,593	\$0	100.00%
Total 390-0000 Canyon HS IP Surveillance Camera and Systems	\$54,593	\$54,593	\$54,593	\$0	100.00%
390-9520 Canyon HS Interim Kitchen (DSA 04-118418)					
1. Design Cost					
1.01 Architect					
UNCOMMITTED	\$0	\$0	\$0	\$0	
GKKWORKS CANNON DESIGN	\$119,620	\$119,620	\$82,025	\$0	68.57%
	\$119,620	\$119,620	\$82,025	\$0	68.57%
2. Construction Cost					
2.01 Construction					
UNCOMMITTED	\$0	\$0	\$0	\$0	
SWINERTON BUILDERS	\$1,053,557	\$1,053,557	\$1,048,571	\$0	99.53%
	\$1,053,557	\$1,053,557	\$1,048,571	\$0	99.53%



Measure S Bond Program
Financial Report for May 2022
Budget vs Actuals by School and Budget Category with Vendor Detail

QSS Data thru 5/31/2022

	Budget	Contracted to Date	Expended to Date	Quarterly Expense Apr '22 - Jun '22	% Expended
2.02 OFCI and Other Construction					
UNCOMMITTED	\$10	\$0	\$0	\$0	
E.R.E.S. ENTERPRISES INC DBA ECONOMY RESTAURANT EQUIP	\$49,721	\$49,721	\$49,721	\$0	100.00%
THE DICKLER CORPORATION DBA CHEFS TOYS	\$109,449	\$109,449	\$109,449	\$0	100.00%
	\$159,180	\$159,170	\$159,170	\$0	99.99%
4. Construction Support Costs					
4.01 Rental					
UNCOMMITTED	\$0	\$0	\$0	\$0	
ELITE MODULAR LEASING & SALES INC	\$161,864	\$161,864	\$144,929	\$0	89.54%
	\$161,864	\$161,864	\$144,929	\$0	89.54%
4.05 DSA Review Fees					
UNCOMMITTED	\$0	\$0	\$0	\$0	
DIVISION OF STATE ARCHITECT	\$15,812	\$15,812	\$15,812	\$0	100.00%
	\$15,812	\$15,812	\$15,812	\$0	100.00%
4.07 DSA Inspection (IOR)					
UNCOMMITTED	\$0	\$0	\$0	\$0	
KNOWLAND CONSTRUCTION SERVICES	\$71,104	\$71,104	\$61,688	\$0	86.76%
	\$71,104	\$71,104	\$61,688	\$0	86.76%
4.08 DSA Construction Phase Testing (LOR)					
UNCOMMITTED	\$0	\$0	\$0	\$0	
AMERICAN ENGINEERING LABORATORIES INC	\$17,100	\$17,100	\$9,219	\$0	53.91%
	\$17,100	\$17,100	\$9,219	\$0	53.91%
4.11 Preliminary Testing (Hazmat, Topo, Geo, etc)					
UNCOMMITTED	\$0	\$0	\$0	\$0	
ENVIRONMENTAL NETWORK CORPORATION	\$4,245	\$4,245	\$3,910	\$0	92.10%
	\$4,245	\$4,245	\$3,910	\$0	92.10%
Total 390-9520 Canyon HS Interim Kitchen (DSA 04-118418)	\$1,602,483	\$1,602,473	\$1,525,325	\$0	95.19%
390-9520 Canyon HS Phase II (DSA 04-120410)					
1. Design Cost					
1.01 Architect					
UNCOMMITTED	\$0	\$0	\$0	\$0	
GKKWORKS CANNON DESIGN	\$663,500	\$663,500	\$492,188	\$0	74.18%
	\$663,500	\$663,500	\$492,188	\$0	74.18%
1.02 AE Design Contingency					
UNCOMMITTED	\$44,000	\$0	\$0	\$0	
GKKWORKS CANNON DESIGN	\$0	\$44,000	\$0	\$0	
	\$44,000	\$44,000	\$0	\$0	0.00%



Measure S Bond Program
Financial Report for May 2022
Budget vs Actuals by School and Budget Category with Vendor Detail

QSS Data thru 5/31/2022

	Budget	Contracted to Date	Expended to Date	Quarterly Expense Apr '22 - Jun '22	% Expended
3. Program and Construction Management					
3.01 Program Management Fees					
UNCOMMITTED	\$98,152	\$0	\$0	\$0	
CUMMING CONSTRUCTION MGMT INC	\$109,418	\$109,418	\$52,534	\$3,903	48.01%
	\$207,570	\$109,418	\$52,534	\$3,903	25.31%
3.02 Construction Management Fees					
UNCOMMITTED	\$1,750	\$0	\$0	\$0	
CORDOBA CORPORATION	\$422,127	\$422,127	\$73,071	\$10,439	17.31%
	\$423,877	\$422,127	\$73,071	\$10,439	17.24%
4. Construction Support Costs					
4.02 Title, Environmental, Stormwater Management					
UNCOMMITTED	\$0	\$0	\$0	\$0	
ENVIRONMENTAL AUDIT INC	\$7,590	\$7,590	\$2,868	\$0	37.78%
	\$7,590	\$7,590	\$2,868	\$0	37.78%
4.03 Commissioning					
UNCOMMITTED	\$0	\$0	\$0	\$0	
P2S ENGINEERING INC	\$4,329	\$4,329	\$3,600	\$540	83.16%
	\$4,329	\$4,329	\$3,600	\$540	83.16%
4.05 DSA Review Fees					
UNCOMMITTED	\$0	\$0	\$0	\$0	
DIVISION OF STATE ARCHITECT	\$57,640	\$57,640	\$57,640	\$0	100.00%
	\$57,640	\$57,640	\$57,640	\$0	100.00%
4.06 Postage, Printing & Advertising					
UNCOMMITTED	\$0	\$0	\$0	\$0	
AMERICAN REPROGRAPHICS CO LLC	\$7,500	\$7,500	\$0	\$0	0.00%
SOUTHERN CALIFORNIA NEWS GROUP	\$3,000	\$3,000	\$0	\$0	0.00%
	\$10,500	\$10,500	\$0	\$0	0.00%
4.11 Preliminary Testing (Hazmat, Topo, Geo, etc)					
UNCOMMITTED	\$250,511	\$0	\$0	\$0	
ENVIRONMENTAL NETWORK CORPORATION	\$19,515	\$19,515	\$12,220	\$0	62.62%
XICOTENCATL ENRIQUE SALAZAR	\$3,825	\$3,825	\$3,825	\$0	100.00%
	\$273,851	\$23,340	\$16,045	\$0	5.86%
Total 390-9520 Canyon HS Phase II (DSA 04-120410)	\$1,692,857	\$1,342,444	\$697,945	\$14,882	41.23%
390-TBD Canyon HS Science Center Unallocated Funds F22					
5. Unallocated Bond Funds					
5.04 Unallocated Bond Funds					
UNCOMMITTED	\$703,502	\$0	\$0	\$0	
	\$703,502	\$0	\$0	\$0	0.00%



Measure S Bond Program
Financial Report for May 2022
Budget vs Actuals by School and Budget Category with Vendor Detail

QSS Data thru 5/31/2022

	Budget	Contracted to Date	Expended to Date	Quarterly Expense Apr '22 - Jun '22	% Expended
Total 390-TBD Canyon HS Science Center Unallocated Funds F22	\$703,502	\$0	\$0	\$0	0.00%
390-TBD Canyon HS Unallocated Funds F22					
5. Unallocated Bond Funds					
5.04 Unallocated Bond Funds					
UNCOMMITTED	\$1,737,907	\$0	\$0	\$0	
	\$1,737,907	\$0	\$0	\$0	0.00%
Total 390-TBD Canyon HS Unallocated Funds F22	\$1,737,907	\$0	\$0	\$0	0.00%
Canyon High School	\$74,441,785	\$54,949,940	\$49,788,188	\$408,335	66.88%
El Modena High School					
391-0000 El Modena HS IP Surveillance Camera and Systems					
4. Construction Support Costs					
4.13 FF&E (Laboratory Tables and Chairs, other)					
UNCOMMITTED	\$0	\$0	\$0	\$0	
CDW GOVERNMENT INC	\$39,388	\$39,388	\$39,388	\$0	100.00%
DIGITAL NETWORKS GROUP INC (F/I IP Camera Software)	\$11,719	\$11,719	\$11,719	\$0	100.00%
INTER-PACIFIC INC	\$30,073	\$30,073	\$30,073	\$0	100.00%
	\$81,179	\$81,179	\$81,179	\$0	100.00%
Total 391-0000 El Modena HS IP Surveillance Camera and Systems	\$81,179	\$81,179	\$81,179	\$0	100.00%
391-9520 El Modena HS Science Center (DSA 04-117098)					
1. Design Cost					
1.01 Architect					
UNCOMMITTED	\$0	\$0	\$0	\$0	
HARLEY ELLIS DEVEREAUX	\$2,503,304	\$2,503,304	\$2,468,684	\$24,534	98.62%
LIONAKIS	\$14,059	\$14,059	\$14,059	\$0	100.00%
	\$2,517,363	\$2,517,363	\$2,482,743	\$24,534	98.62%
2. Construction Cost					
2.01 Construction					
UNCOMMITTED	\$4	\$0	\$0	\$0	
ANGELES CONTRACTOR, INC	\$26,953,183	\$26,953,183	\$25,755,046	\$0	95.55%
	\$26,953,188	\$26,953,183	\$25,755,046	\$0	95.55%
2.02 OFCI and Other Construction					
UNCOMMITTED	\$5,719	\$0	\$0	\$0	
ACCO ENGINEERED SYSTEMS INC	\$355,544	\$355,544	\$355,544	\$0	100.00%



**Measure S Bond Program
Financial Report for May 2022
Budget vs Actuals by School and Budget Category with Vendor Detail**

QSS Data thru 5/31/2022

	Budget	Contracted to Date	Expended to Date	Quarterly Expense Apr '22 - Jun '22	% Expended
AMERICAN REPROGRAPHICS CO LLC	\$1,026	\$1,026	\$0	\$0	0.00%
ANIXTER	\$5,092	\$5,092	\$0	\$0	0.00%
ARROW RESTAURANT EQUIPMENT	\$14,232	\$14,232	\$14,213	\$0	99.87%
CAROLINA BIOLOGICAL SUPPLY	\$24,213	\$24,213	\$20,052	\$0	82.82%
DEVELOPMENT GROUP INC	\$54,520	\$54,520	\$54,520	\$1,581	100.00%
FAIR PLAY SCOREBOARDS	\$17,694	\$17,694	\$17,694	\$0	100.00%
FISHER SCIENCE EDUCATION	\$25,951	\$25,951	\$25,951	\$0	100.00%
FLINN SCIENTIFIC INC	\$12,970	\$12,970	\$12,364	\$0	95.33%
PROFESSIONAL TURF SPECIALTIES	\$23,460	\$23,460	\$23,460	\$0	100.00%
WW GRAINGER INC	\$6,039	\$6,039	\$4,081	\$0	67.58%
	\$546,461	\$540,742	\$527,881	\$1,581	96.60%
3. Program and Construction Management					
3.01 Program Management Fees					
UNCOMMITTED	\$7,817	\$0	\$0	\$0	
CUMMING CONSTRUCTION MGMT INC	\$1,420,299	\$1,420,299	\$1,391,410	\$80,379	97.97%
	\$1,428,116	\$1,420,299	\$1,391,410	\$80,379	97.43%
3.02 Construction Management Fees					
UNCOMMITTED	\$3,200	\$0	\$0	\$0	
ARCADIS U.S. INC	\$2,348,909	\$2,348,909	\$2,251,362	\$0	95.85%
CORDOBA CORPORATION	\$90,336	\$90,336	\$90,336	\$0	100.00%
	\$2,442,445	\$2,439,245	\$2,341,698	\$0	95.88%
4. Construction Support Costs					
4.02 Title, Environmental, Stormwater Management					
UNCOMMITTED	\$17,669	\$0	\$0	\$0	
CHICAGO TITLE COMPANY	\$1,500	\$1,500	\$1,500	\$0	100.00%
CITY OF ORANGE (PUBLIC WORKS)	\$71	\$71	\$71	\$0	100.00%
CITY OF ORANGE (WATER DIVISION)	\$16,048	\$16,048	\$10,942	\$0	68.18%
ENVIRONMENTAL AUDIT INC	\$10,950	\$10,950	\$8,548	\$0	78.06%
OUSD COST OF INTEREST DISTRIBUTION	\$1	\$1	\$1	\$0	100.00%
	\$46,239	\$28,570	\$21,061	\$0	45.55%
4.03 Commissioning					
UNCOMMITTED	\$6,112	\$0	\$0	\$0	
P2S ENGINEERING INC	\$30,558	\$30,558	\$29,169	\$123	95.45%
	\$36,670	\$30,558	\$29,169	\$123	79.54%
4.05 DSA Review Fees					
UNCOMMITTED	\$0	\$0	\$0	\$0	
DIVISION OF STATE ARCHITECT	\$306,338	\$306,338	\$306,338	\$0	100.00%
	\$306,338	\$306,338	\$306,338	\$0	100.00%
4.06 Postage, Printing & Advertising					



Measure S Bond Program
Financial Report for May 2022
Budget vs Actuals by School and Budget Category with Vendor Detail

QSS Data thru 5/31/2022

	Budget	Contracted to Date	Expended to Date	Quarterly Expense Apr '22 - Jun '22	% Expended
UNCOMMITTED	\$9,947	\$0	\$0	\$0	
AMERICAN REPROGRAPHICS CO LLC	\$20,110	\$20,110	\$19,155	\$0	95.25%
SOUTHERN CALIFORNIA NEWS GROUP	\$2,024	\$2,024	\$2,024	\$0	100.00%
	\$32,081	\$22,134	\$21,179	\$0	66.02%
4.07 DSA Inspection (IOR)					
UNCOMMITTED	\$0	\$0	\$0	\$0	
BPI INSPECTION SERVICE	\$729,569	\$729,569	\$688,184	\$20,020	94.33%
	\$729,569	\$729,569	\$688,184	\$20,020	94.33%
4.08 DSA Construction Phase Testing (LOR)					
UNCOMMITTED	\$1	\$0	\$0	\$0	
KOURY ENGINEERING & TESTING INC (Geotechnical Engineering)	\$815,337	\$815,337	\$805,029	\$22,714	98.74%
	\$815,338	\$815,337	\$805,029	\$22,714	98.74%
4.09 Relocation					
UNCOMMITTED	\$16,319	\$0	\$0	\$0	
Beltmann Group, Inc.	\$7,080	\$7,080	\$5,129	\$4,279	72.44%
ULINE INC	\$1,601	\$1,601	\$1,586	\$0	99.02%
	\$25,000	\$8,681	\$6,715	\$4,279	26.86%
4.11 Preliminary Testing (Hazmat, Topo, Geo, etc)					
UNCOMMITTED	\$13,619	\$0	\$0	\$0	
ALLEGIAN FIRE PROTECTION INC	\$525	\$525	\$525	\$0	100.00%
CALIFORNIA GEOLOGICAL SURVEY (Geology and Seismology Review)	\$3,600	\$3,600	\$3,600	\$0	100.00%
ENVIRONMENTAL NETWORK CORPORATION	\$14,722	\$22,532	\$14,132	\$8,722	95.99%
HARLEY ELLIS DEVEREAUX	\$14,908	\$14,908	\$14,908	\$0	100.00%
NINYO & MOORE	\$29,981	\$29,981	\$29,771	\$0	99.30%
PCA ARBORISTS & CONSULTANTS INC	\$1,569	\$1,569	\$1,569	\$0	100.00%
THE CONVERSE PROFESSIONAL GROUP (Soils Investigation)	\$30,640	\$30,640	\$30,640	\$0	100.00%
	\$109,564	\$103,755	\$95,145	\$8,722	86.84%
4.12 Utility Connection Fees (Local Permits)					
UNCOMMITTED	\$76,261	\$0	\$0	\$0	
DIVISION OF STATE ARCHITECT	\$0	\$0	\$0	\$0	
SOUTHERN CALIFORNIA EDISON	\$3,665	\$3,665	\$3,665	\$0	100.00%
STATE WATER RESOURCES CONTROL BOARD (SWRCB)	\$1,593	\$1,593	\$1,593	\$600	100.00%
	\$81,519	\$5,258	\$5,258	\$600	6.45%
4.13 FF&E (Laboratory Tables and Chairs, other)					
UNCOMMITTED	\$35,734	\$0	\$0	\$0	
AMS.NET	\$3,754	\$3,754	\$3,754	\$0	100.00%
CDW GOVERNMENT INC	\$64,325	\$74,662	\$64,325	\$0	100.00%
FISHER SCIENCE EDUCATION	\$6,494	\$6,494	\$5,827	\$0	89.73%
FLINN SCIENTIFIC INC	\$2,081	\$2,081	\$2,081	\$0	100.00%
INTER-PACIFIC INC	\$9,256	\$9,256	\$9,256	\$0	100.00%



**Measure S Bond Program
Financial Report for May 2022
Budget vs Actuals by School and Budget Category with Vendor Detail**

QSS Data thru 5/31/2022

	Budget	Contracted to Date	Expended to Date	Quarterly Expense Apr '22 - Jun '22	% Expended
SIERRA SCHOOL EQUIPMENT COMPANY	\$516,146	\$516,146	\$512,696	\$163,497	99.33%
TURTLE STORAGE dba AMERICAN BICYCLE CO	\$6,871	\$6,871	\$6,314	\$0	91.89%
VWR INTERNATIONAL LLC	\$47,922	\$52,714	\$47,922	\$0	100.00%
	\$692,583	\$671,978	\$652,175	\$163,497	94.17%
5. Contingency					
5.01 Construction Contingency					
UNCOMMITTED	\$846,612	\$0	\$0	\$0	
	\$846,612	\$0	\$0	\$0	0.00%
5.02 Project Contingency					
UNCOMMITTED	\$1,563,750	\$0	\$0	\$0	
ARCADIS U.S. INC	\$0	\$0	\$0	\$0	
	\$1,563,750	\$0	\$0	\$0	0.00%
Total 391-9520 El Modena HS Science Center (DSA 04-117098)	\$39,172,836	\$36,593,011	\$35,129,030	\$326,449	89.68%
391-9520 El Modena HS Phase II (DSA 04-120032)					
1. Design Cost					
1.01 Architect					
UNCOMMITTED	\$0	\$0	\$0	\$0	
HARLEY ELLIS DEVEREAUX	\$1,918,220	\$1,918,220	\$1,363,541	\$2,486	71.08%
	\$1,918,220	\$1,918,220	\$1,363,541	\$2,486	71.08%
3. Program and Construction Management					
3.01 Program Management Fees					
UNCOMMITTED	\$0	\$0	\$0	\$0	
CUMMING CONSTRUCTION MGMT INC	\$199,612	\$199,612	\$104,200	\$6,264	52.20%
	\$199,612	\$199,612	\$104,200	\$6,264	52.20%
3.02 Construction Management Fees					
UNCOMMITTED	\$1,050	\$0	\$0	\$0	
CORDOBA CORPORATION	\$515,353	\$515,353	\$97,818	\$8,556	18.98%
	\$516,403	\$515,353	\$97,818	\$8,556	18.94%
4. Construction Support Costs					
4.02 Title, Environmental, Stormwater Management					
UNCOMMITTED	\$0	\$0	\$0	\$0	
ENVIRONMENTAL AUDIT INC	\$7,590	\$7,590	\$2,728	\$0	35.94%
	\$7,590	\$7,590	\$2,728	\$0	35.94%
4.03 Commissioning					
UNCOMMITTED	\$0	\$0	\$0	\$0	
P2S ENGINEERING INC	\$11,890	\$11,890	\$8,880	\$3,330	74.68%



Measure S Bond Program
Financial Report for May 2022
Budget vs Actuals by School and Budget Category with Vendor Detail

QSS Data thru 5/31/2022

	Budget	Contracted to Date	Expended to Date	Quarterly Expense Apr '22 - Jun '22	% Expended
4.05 DSA Review Fees	\$11,890	\$11,890	\$8,880	\$3,330	74.68%
UNCOMMITTED	\$0	\$0	\$0	\$0	
DIVISION OF STATE ARCHITECT	\$212,750	\$212,750	\$212,750	\$0	100.00%
	\$212,750	\$212,750	\$212,750	\$0	100.00%
4.06 Postage, Printing & Advertising					
UNCOMMITTED	\$0	\$0	\$0	\$0	
AMERICAN REPROGRAPHICS CO LLC	\$8,000	\$8,000	\$0	\$0	0.00%
SOUTHERN CALIFORNIA NEWS GROUP	\$3,000	\$3,000	\$0	\$0	0.00%
	\$11,000	\$11,000	\$0	\$0	0.00%
4.09 Relocation					
UNCOMMITTED	\$0	\$0	\$0	\$0	
Beltmann Group, Inc.	\$3,500	\$3,500	\$0	\$0	0.00%
	\$3,500	\$3,500	\$0	\$0	0.00%
4.11 Preliminary Testing (Hazmat, Topo, Geo, etc)					
UNCOMMITTED	\$11,500	\$0	\$0	\$0	
ARMSTRONG & BROOKS CONSULTING ENG	\$20,000	\$20,000	\$4,940	\$0	24.70%
GROUP DELTA CONSULTANTS INC	\$17,100	\$17,100	\$10,004	\$0	58.50%
KOURY ENGINEERING & TESTING INC (Geotechnical Engineering)	\$22,350	\$22,350	\$22,350	\$0	100.00%
	\$70,950	\$59,450	\$37,294	\$0	52.56%
Total 391-9520 El Modena HS Phase II (DSA 04-120032)	\$2,951,915	\$2,939,365	\$1,827,211	\$20,636	61.90%
391-9520 El Modena HS Quad Shade Structures (DSA 04-119124)					
1. Design Cost					
1.01 Architect					
UNCOMMITTED	\$0	\$0	\$0	\$0	
HARLEY ELLIS DEVEREAUX	\$79,340	\$79,340	\$0	\$0	0.00%
	\$79,340	\$79,340	\$0	\$0	0.00%
4. Construction Support Costs					
4.05 DSA Review Fees					
UNCOMMITTED	\$0	\$0	\$0	\$0	
DIVISION OF STATE ARCHITECT	\$9,650	\$9,650	\$9,650	\$0	100.00%
	\$9,650	\$9,650	\$9,650	\$0	100.00%
4.06 Postage, Printing & Advertising					
UNCOMMITTED	\$0	\$0	\$0	\$0	
AMERICAN REPROGRAPHICS CO LLC	\$86	\$86	\$86	\$0	100.00%
	\$86	\$86	\$86	\$0	100.00%



Measure S Bond Program
Financial Report for May 2022
Budget vs Actuals by School and Budget Category with Vendor Detail

QSS Data thru 5/31/2022

	Budget	Contracted to Date	Expended to Date	Quarterly Expense Apr '22 - Jun '22	% Expended
Total 391-9520 El Modena HS Quad Shade Structures (DSA 04-119124)	\$89,076	\$89,076	\$9,736	\$0	10.93%
391-TBD El Modena HS Science Center Unallocated Funds F22					
5. Unallocated Bond Funds					
5.04 Unallocated Bond Funds					
UNCOMMITTED	\$1,138,078	\$0	\$0	\$0	
	\$1,138,078	\$0	\$0	\$0	0.00%
Total 391-TBD El Modena HS Science Center Unallocated Funds F22	\$1,138,078	\$0	\$0	\$0	0.00%
391-9520 El Modena HS Unallocated Funds F21					
4. Construction Support Costs					
4.15 Miscellaneous Fees					
UNCOMMITTED	\$0	\$0	\$0	\$0	
OUSD COST OF INTEREST DISTRIBUTION	\$53,330	\$53,330	\$53,330	\$0	100.00%
	\$53,330	\$53,330	\$53,330	\$0	100.00%
5. Program Reserve					
5.03 Interest Earned - Reserve					
UNCOMMITTED	\$77,419	\$0	\$0	\$0	
	\$77,419	\$0	\$0	\$0	0.00%
Total 391-9520 El Modena HS Unallocated Funds F21	\$130,749	\$53,330	\$53,330	\$0	40.79%
391-TBD El Modena HS Unallocated Funds F22					
5. Unallocated Bond Funds					
5.04 Unallocated Bond Funds					
UNCOMMITTED	\$30,017,362	\$0	\$0	\$0	
	\$30,017,362	\$0	\$0	\$0	0.00%
Total 391-TBD El Modena HS Unallocated Funds F22	\$30,017,362	\$0	\$0	\$0	0.00%
El Modena High School	\$73,581,196	\$39,755,961	\$37,100,486	\$347,085	50.42%
Orange High School					
392-0000 Orange HS IP Surveillance Camera and Systems					
4. Construction Support Costs					
4.13 FF&E (Laboratory Tables and Chairs, other)					
UNCOMMITTED	\$0	\$0	\$0	\$0	
CDW GOVERNMENT INC	\$53,662	\$53,662	\$53,662	\$0	100.00%
DIGITAL NETWORKS GROUP INC (F/I IP Camera Software)	\$13,569	\$13,569	\$13,569	\$0	100.00%



Measure S Bond Program
Financial Report for May 2022
Budget vs Actuals by School and Budget Category with Vendor Detail

QSS Data thru 5/31/2022

	Budget	Contracted to Date	Expended to Date	Quarterly Expense Apr '22 - Jun '22	% Expended
INTER-PACIFIC INC	\$34,837	\$34,837	\$34,837	\$0	100.00%
	\$102,068	\$102,068	\$102,068	\$0	100.00%
Total 392-0000 Orange HS IP Surveillance Camera and Systems	\$102,068	\$102,068	\$102,068	\$0	100.00%
392-9520 Orange HS Science Bldg (DSA 04-116859)					
1. Design Cost					
1.01 Architect					
UNCOMMITTED	\$151,933	\$0	\$0	\$0	
LIONAKIS	\$1,854,196	\$1,854,196	\$1,823,594	\$0	98.35%
	\$2,006,129	\$1,854,196	\$1,823,594	\$0	90.90%
2. Construction Cost					
2.01 Construction					
UNCOMMITTED	\$1	\$0	\$0	\$0	
GIANNELLI ELECTRIC INC	\$14,878	\$14,878	\$14,878	\$0	100.00%
INTEGRATED DEMOLITION AND REMEDIATION (Abatement and Demolition)	\$44,800	\$44,800	\$44,800	\$0	100.00%
J & A FENCE (Custodial Storage Fencing)	\$0	\$0	\$0	\$0	
KYA SERVICES LLC (Install Carpet)	\$0	\$0	\$0	\$0	
OLESH, KEITH (Termite Services)	\$0	\$0	\$0	\$0	
PINNER CONSTRUCTION	\$27,190,987	\$27,190,987	\$27,190,987	\$0	100.00%
SOUTHERN CALIFORNIA NEWS GROUP	\$0	\$0	\$0	\$0	
TIME & ALARM SYSTEMS	\$3,100	\$3,100	\$3,100	\$0	100.00%
UNIVERSAL ASPHALT CO (Remove and Patch Asphalt)	\$6,830	\$6,830	\$6,830	\$0	100.00%
	\$27,260,596	\$27,260,595	\$27,260,595	\$0	100.00%
2.02 OFCI and Other Construction					
UNCOMMITTED	\$61,260	\$0	\$0	\$0	
ACCO ENGINEERED SYSTEMS INC	\$62,883	\$62,883	\$62,883	\$0	100.00%
AMERICAN REPROGRAPHICS CO LLC	\$8,736	\$8,736	\$7,710	\$7,710	88.26%
ARROW RESTAURANT EQUIPMENT	\$13,556	\$13,556	\$13,432	\$0	99.08%
BLUE RIBBON TROPHY	\$1,067	\$1,067	\$1,067	\$1,067	100.00%
CAROLINA BIOLOGICAL SUPPLY	\$16,559	\$16,559	\$16,480	\$0	99.52%
CITY OF ORANGE (PUBLIC WORKS)	\$2,000	\$2,000	\$2,000	\$0	100.00%
DAHLBERG, KENT & AMY dba NEW DIMENSION	\$7,602	\$7,602	\$0	\$0	0.00%
DEVELOPMENT GROUP INC	\$37,866	\$37,866	\$37,866	\$0	100.00%
FISHER SCIENCE EDUCATION	\$25,736	\$25,736	\$24,863	\$0	96.61%
FLINN SCIENTIFIC INC	\$10,263	\$10,263	\$10,263	\$0	100.00%
GIANNELLI ELECTRIC INC	\$24,684	\$24,684	\$24,684	\$0	100.00%
GRUETT TREE CO INC (Removal of Trees)	\$7,625	\$7,625	\$7,625	\$0	100.00%
INTER-PACIFIC INC	\$6,585	\$6,585	\$0	\$0	0.00%



**Measure S Bond Program
Financial Report for May 2022
Budget vs Actuals by School and Budget Category with Vendor Detail**

QSS Data thru 5/31/2022

	Budget	Contracted to Date	Expended to Date	Quarterly Expense Apr '22 - Jun '22	% Expended
J & A FENCE (Custodial Storage Fencing)	\$6,885	\$6,885	\$6,885	\$0	100.00%
KYA SERVICES LLC (Install Carpet)	\$0	\$0	\$0	\$0	
OLESH, KEITH (Termite Services)	\$1,500	\$1,500	\$1,500	\$0	100.00%
SOUTHERN CALIFORNIA NEWS GROUP	\$0	\$0	\$0	\$0	
TRIMARK RAYGAL LLC	\$0	\$0	\$0	\$0	
VORTEX INDUSTRIES, INC.	\$6,804	\$6,804	\$6,804	\$0	100.00%
WW GRAINGER INC	\$2,292	\$2,292	\$2,292	\$0	100.00%
	\$303,904	\$242,643	\$226,354	\$8,778	74.48%
3. Program and Construction Management					
3.01 Program Management Fees					
UNCOMMITTED	\$531,596	\$0	\$0	\$0	
CUMMING CONSTRUCTION MGMT INC	\$1,010,155	\$1,062,336	\$979,395	\$0	96.95%
	\$1,541,750	\$1,062,336	\$979,395	\$0	63.52%
3.02 Construction Management Fees					
UNCOMMITTED	\$59,981	\$0	\$0	\$0	
BALFOUR BEATTY CONSTRUCTION	\$1,757,253	\$1,757,254	\$1,755,159	\$0	99.88%
CORDOBA CORPORATION	\$86,549	\$86,549	\$86,434	\$0	99.87%
	\$1,903,783	\$1,843,803	\$1,841,593	\$0	96.73%
4. Construction Support Costs					
4.02 Title, Environmental, Stormwater Management					
UNCOMMITTED	\$34,796	\$0	\$0	\$0	
CHICAGO TITLE COMPANY	\$1,500	\$1,500	\$1,500	\$0	100.00%
OUSD COST OF INTEREST DISTRIBUTION	\$1	\$1	\$1	\$0	100.00%
PLACEWORKS INC	\$52,231	\$52,231	\$52,231	\$0	100.00%
STATE WATER RESOURCES CONTROL BOARD (SWRCB)	\$726	\$726	\$726	\$0	100.00%
	\$89,254	\$54,458	\$54,458	\$0	61.01%
4.03 Commissioning					
UNCOMMITTED	\$6,117	\$0	\$0	\$0	
P2S ENGINEERING INC	\$30,585	\$30,585	\$30,170	\$0	98.64%
	\$36,702	\$30,585	\$30,170	\$0	82.20%
4.05 DSA Review Fees					
UNCOMMITTED	\$28,992	\$0	\$0	\$0	
DIVISION OF STATE ARCHITECT	\$342,871	\$342,871	\$342,871	\$0	100.00%
OUSD REVOLVING CASH	\$500	\$500	\$500	\$0	100.00%
	\$372,364	\$343,371	\$343,371	\$0	92.21%
4.06 Postage, Printing & Advertising					
UNCOMMITTED	\$36,374	\$0	\$0	\$0	
AMERICAN REPROGRAPHICS CO LLC	\$11,734	\$11,734	\$8,734	\$0	74.43%
SOUTHERN CALIFORNIA NEWS GROUP	\$8,518	\$8,518	\$8,518	\$0	100.00%
	\$56,626	\$20,252	\$17,252	\$0	30.47%



Measure S Bond Program
Financial Report for May 2022
Budget vs Actuals by School and Budget Category with Vendor Detail

QSS Data thru 5/31/2022

	Budget	Contracted to Date	Expended to Date	Quarterly Expense Apr '22 - Jun '22	% Expended
4.07 DSA Inspection (IOR)					
UNCOMMITTED	\$145,585	\$0	\$0	\$0	
KNOWLAND CONSTRUCTION SERVICES	\$321,507	\$321,507	\$286,404	\$0	89.08%
	\$467,092	\$321,507	\$286,404	\$0	61.32%
4.08 DSA Construction Phase Testing (LOR)					
UNCOMMITTED	\$125,025	\$0	\$0	\$0	
NINYO & MOORE	\$327,624	\$327,624	\$227,848	\$0	69.55%
	\$452,649	\$327,624	\$227,848	\$0	50.34%
4.09 Relocation					
UNCOMMITTED	\$15,706	\$0	\$0	\$0	
Beltmann Group, Inc.	\$6,229	\$6,229	\$4,876	\$0	78.27%
ULINE INC	\$3,065	\$3,065	\$3,065	\$0	100.00%
	\$25,000	\$9,294	\$7,941	\$0	31.76%
4.10 Labor Compliance					
UNCOMMITTED	\$40,951	\$0	\$0	\$0	
	\$40,951	\$0	\$0	\$0	0.00%
4.11 Preliminary Testing (Hazmat, Topo, Geo, etc)					
UNCOMMITTED	\$198,437	\$0	\$0	\$0	
CALIFORNIA GEOLOGICAL SURVEY (Geology and Seismology Review)	\$3,600	\$3,600	\$3,600	\$0	100.00%
ENVIRONMENTAL NETWORK CORPORATION	\$4,925	\$4,925	\$2,590	\$0	52.59%
KOURY ENGINEERING & TESTING INC (Geotechnical Engineering)	\$13,300	\$13,300	\$13,300	\$0	100.00%
PENCO ENGINEERING INC (Topographical Survey Services)	\$42,350	\$42,350	\$41,070	\$0	96.98%
RMA GROUP (dba SITESCAN)	\$49,533	\$49,533	\$49,533	\$0	100.00%
	\$312,145	\$113,708	\$110,093	\$0	35.27%
4.12 Utility Connection Fees (Local Permits)					
UNCOMMITTED	\$151,714	\$0	\$0	\$0	
CITY OF ORANGE (PUBLIC WORKS)	\$2,500	\$2,500	\$2,500	\$0	100.00%
SOUTHERN CALIFORNIA EDISON	\$6,912	\$6,912	\$6,912	\$0	100.00%
SOUTHERN CALIFORNIA GAS CO	\$2,124	\$2,124	\$2,124	\$0	100.00%
STATE WATER RESOURCES CONTROL BOARD (SWRCB)	\$553	\$553	\$553	\$0	100.00%
	\$163,803	\$12,089	\$12,089	\$0	7.38%
4.13 FF&E (Laboratory Tables and Chairs, other)					
UNCOMMITTED	\$11,686	\$0	\$0	\$0	
CDW GOVERNMENT INC	\$59,662	\$59,662	\$59,658	\$0	99.99%
CONEXWEST	\$9,466	\$9,466	\$9,419	\$0	99.51%
CP PRODUCTS INC	\$4,834	\$4,834	\$4,834	\$0	100.00%
DEVELOPMENT GROUP INC	\$0	\$0	\$0	\$0	
FISHER SCIENCE EDUCATION	\$0	\$0	\$0	\$0	
GORM	\$11,423	\$11,423	\$11,415	\$0	99.93%
HILLYARD INC	\$32,572	\$32,572	\$32,572	\$0	100.00%



Measure S Bond Program
Financial Report for May 2022
Budget vs Actuals by School and Budget Category with Vendor Detail

QSS Data thru 5/31/2022

	Budget	Contracted to Date	Expended to Date	Quarterly Expense Apr '22 - Jun '22	% Expended
INTER-PACIFIC INC	\$7,904	\$7,904	\$7,904	\$0	100.00%
PSI DBA WATER VISIONS INC	\$8,527	\$8,527	\$8,527	\$0	100.00%
SIERRA SCHOOL EQUIPMENT COMPANY	\$464,248	\$464,248	\$464,248	\$0	100.00%
TURTLE STORAGE dba AMERICAN BICYCLE CO	\$6,871	\$6,871	\$6,537	\$0	95.14%
VORTEX INDUSTRIES, INC.	\$0	\$0	\$0	\$0	
VWR INTERNATIONAL LLC	\$34,314	\$34,314	\$34,314	\$0	100.00%
	\$651,508	\$639,821	\$639,428	\$0	98.15%
4.14 Legal Counsel					
UNCOMMITTED	\$81,902	\$0	\$0	\$0	
	\$81,902	\$0	\$0	\$0	0.00%
5. Contingency					
5.01 Construction Contingency					
UNCOMMITTED	\$1,415,413	\$0	\$0	\$0	
	\$1,415,413	\$0	\$0	\$0	0.00%
5.02 Project Contingency					
UNCOMMITTED	\$4,279,214	\$0	\$0	\$0	
	\$4,279,214	\$0	\$0	\$0	0.00%
Total 392-9520 Orange HS Science Bldg (DSA 04-116859)	\$41,460,785	\$34,136,282	\$33,860,584	\$8,778	81.67%
392-9520 Orange HS Shade Structure (DSA 04-118351)					
1. Design Cost					
1.01 Architect					
UNCOMMITTED	\$0	\$0	\$0	\$0	
LIONAKIS	\$17,317	\$17,317	\$17,317	\$0	100.00%
	\$17,317	\$17,317	\$17,317	\$0	100.00%
2. Construction Cost					
2.01 Construction					
UNCOMMITTED	\$0	\$0	\$0	\$0	
PINNER CONSTRUCTION	\$113,500	\$113,500	\$113,500	\$0	100.00%
	\$113,500	\$113,500	\$113,500	\$0	100.00%
3. Program and Construction Management					
3.01 Program Management Fees					
UNCOMMITTED	\$0	\$0	\$0	\$0	
CUMMING CONSTRUCTION MGMT INC	\$1,838	\$1,838	\$1,838	\$0	100.00%
	\$1,838	\$1,838	\$1,838	\$0	100.00%
3.02 Construction Management Fees					
UNCOMMITTED	\$0	\$0	\$0	\$0	



Measure S Bond Program
Financial Report for May 2022
Budget vs Actuals by School and Budget Category with Vendor Detail

QSS Data thru 5/31/2022

	Budget	Contracted to Date	Expended to Date	Quarterly Expense Apr '22 - Jun '22	% Expended
BALFOUR BEATTY CONSTRUCTION	\$5,956	\$5,956	\$5,956	\$0	100.00%
	\$5,956	\$5,956	\$5,956	\$0	100.00%
4. Construction Support Costs					
4.05 DSA Review Fees					
UNCOMMITTED	\$0	\$0	\$0	\$0	
DIVISION OF STATE ARCHITECT	\$1,873	\$1,873	\$1,873	\$0	100.00%
	\$1,873	\$1,873	\$1,873	\$0	100.00%
4.07 DSA Inspection (IOR)					
UNCOMMITTED	\$0	\$0	\$0	\$0	
KNOWLAND CONSTRUCTION SERVICES	\$1,740	\$1,740	\$1,740	\$0	100.00%
	\$1,740	\$1,740	\$1,740	\$0	100.00%
4.08 DSA Construction Phase Testing (LOR)					
UNCOMMITTED	\$0	\$0	\$0	\$0	
NINYO & MOORE	\$7,408	\$7,408	\$7,408	\$0	100.00%
	\$7,408	\$7,408	\$7,408	\$0	100.00%
Total 392-9520 Orange HS Shade Structure (DSA 04-118351)	\$149,631	\$149,631	\$149,631	\$0	100.00%
392-9520 Orange HS Site Improvements (DSA 04-116673)					
1. Design Cost					
1.01 Architect					
UNCOMMITTED	\$0	\$0	\$0	\$0	
LIONAKIS	\$450,189	\$450,189	\$446,286	\$0	99.13%
SILVER CREEK INDUSTRIES INC (Engineering for Warming Kitchen Relocatable Building)	\$29,682	\$29,682	\$29,682	\$0	100.00%
	\$479,871	\$479,871	\$475,968	\$0	99.19%
2. Construction Cost					
2.01 Construction					
UNCOMMITTED	\$0	\$0	\$0	\$0	
KYA SERVICES LLC (Install Carpet)	\$20,824	\$20,824	\$9,564	\$0	45.93%
SWINERTON BUILDERS	\$6,556,428	\$6,556,428	\$6,556,428	\$0	100.00%
TRIMARK RAYGAL LLC	\$89,860	\$89,860	\$89,860	\$0	100.00%
	\$6,667,112	\$6,667,112	\$6,655,852	\$0	99.83%
2.02 OFCI and Other Construction					
UNCOMMITTED	\$0	\$0	\$0	\$0	
ACCO ENGINEERED SYSTEMS INC	\$209,074	\$209,074	\$209,074	\$0	100.00%
	\$209,074	\$209,074	\$209,074	\$0	100.00%
3. Program and Construction Management					



**Measure S Bond Program
Financial Report for May 2022
Budget vs Actuals by School and Budget Category with Vendor Detail**

QSS Data thru 5/31/2022

	Budget	Contracted to Date	Expended to Date	Quarterly Expense Apr '22 - Jun '22	% Expended
3.01 Program Management Fees					
UNCOMMITTED	\$0	\$0	\$0	\$0	
BALFOUR BEATTY CONSTRUCTION	\$0	\$0	\$0	\$0	
CUMMING CONSTRUCTION MGMT INC	\$115,479	\$115,479	\$115,479	\$0	100.00%
	\$115,479	\$115,479	\$115,479	\$0	100.00%
3.02 Construction Management Fees					
UNCOMMITTED	\$0	\$0	\$0	\$0	
BALFOUR BEATTY CONSTRUCTION	\$296,554	\$296,554	\$296,554	\$0	100.00%
	\$296,554	\$296,554	\$296,554	\$0	100.00%
4. Construction Support Costs					
4.02 Title, Environmental, Stormwater Management					
UNCOMMITTED	\$0	\$0	\$0	\$0	
ORANGE COUNTY HEALTH CARE AGENCY	\$1,470	\$1,470	\$1,470	\$0	100.00%
	\$1,470	\$1,470	\$1,470	\$0	100.00%
4.03 Commissioning					
UNCOMMITTED	\$0	\$0	\$0	\$0	
P2S ENGINEERING INC	\$4,755	\$4,755	\$4,667	\$0	98.15%
	\$4,755	\$4,755	\$4,667	\$0	98.15%
4.05 DSA Review Fees					
UNCOMMITTED	\$3,853	\$0	\$0	\$0	
DIVISION OF STATE ARCHITECT	\$94,585	\$94,585	\$94,585	\$0	100.00%
	\$98,438	\$94,585	\$94,585	\$0	96.09%
4.06 Postage, Printing & Advertising					
UNCOMMITTED	\$1	\$0	\$0	\$0	
AMERICAN REPROGRAPHICS CO LLC	\$7,630	\$7,630	\$7,630	\$0	100.00%
SOUTHERN CALIFORNIA NEWS GROUP	\$1,264	\$1,264	\$1,264	\$0	100.00%
	\$8,895	\$8,894	\$8,894	\$0	99.99%
4.07 DSA Inspection (IOR)					
UNCOMMITTED	\$0	\$0	\$0	\$0	
KNOWLAND CONSTRUCTION SERVICES	\$104,480	\$104,480	\$96,985	\$0	92.83%
	\$104,480	\$104,480	\$96,985	\$0	92.83%
4.08 DSA Construction Phase Testing (LOR)					
UNCOMMITTED	\$0	\$0	\$0	\$0	
NINYO & MOORE	\$113,255	\$113,255	\$112,544	\$0	99.37%
	\$113,255	\$113,255	\$112,544	\$0	99.37%
4.11 Preliminary Testing (Hazmat, Topo, Geo, etc)					
UNCOMMITTED	\$0	\$0	\$0	\$0	
ENVIRONMENTAL NETWORK CORPORATION	\$9,100	\$9,100	\$9,012	\$0	99.03%
	\$9,100	\$9,100	\$9,012	\$0	99.03%



Measure S Bond Program
Financial Report for May 2022
Budget vs Actuals by School and Budget Category with Vendor Detail

QSS Data thru 5/31/2022

	Budget	Contracted to Date	Expended to Date	Quarterly Expense Apr '22 - Jun '22	% Expended
Total 392-9520 Orange HS Site Improvements (DSA 04-116673)	\$8,108,482	\$8,104,629	\$8,081,083	\$0	99.66%
392-9520 Orange HS Phase II (DSA 04-120151)					
1. Design Cost					
1.01 Architect					
UNCOMMITTED	\$121,050	\$0	\$0	\$0	
LIONAKIS	\$1,409,450	\$1,409,450	\$1,006,274	\$14,490	71.39%
	\$1,530,500	\$1,409,450	\$1,006,274	\$14,490	65.75%
2. Construction Cost					
2.00 Other Construction - Swing Space					
UNCOMMITTED	\$384	\$0	\$0	\$0	
DAHLBERG, KENT & AMY dba NEW DIMENSION	\$99,066	\$99,066	\$94,113	\$0	95.00%
	\$99,450	\$99,066	\$94,113	\$0	94.63%
3. Program and Construction Management					
3.01 Program Management Fees					
UNCOMMITTED	\$1	\$0	\$0	\$0	
CUMMING CONSTRUCTION MGMT INC	\$201,328	\$201,328	\$115,152	\$9,810	57.20%
	\$201,329	\$201,328	\$115,152	\$9,810	57.20%
3.02 Construction Management Fees					
UNCOMMITTED	\$2,100	\$0	\$0	\$0	
CORDOBA CORPORATION	\$511,365	\$511,365	\$92,622	\$9,809	18.11%
	\$513,465	\$511,365	\$92,622	\$9,809	18.04%
4. Construction Support Costs					
4.02 Title, Environmental, Stormwater Management					
UNCOMMITTED	\$0	\$0	\$0	\$0	
CITY OF ORANGE (PUBLIC WORKS)	\$3,000	\$3,000	\$3,000	\$0	100.00%
CITY OF ORANGE (WATER DIVISION)	\$2,000	\$2,000	\$2,000	\$0	100.00%
ENVIRONMENTAL AUDIT INC	\$7,590	\$7,590	\$2,388	\$0	31.46%
	\$12,590	\$12,590	\$7,388	\$0	58.68%
4.03 Commissioning					
UNCOMMITTED	\$0	\$0	\$0	\$0	
P2S ENGINEERING INC	\$4,801	\$4,801	\$4,100	\$1,640	85.40%
	\$4,801	\$4,801	\$4,100	\$1,640	85.40%
4.05 DSA Review Fees					
UNCOMMITTED	\$0	\$0	\$0	\$0	
DIVISION OF STATE ARCHITECT	\$153,550	\$153,550	\$153,550	\$0	100.00%
	\$153,550	\$153,550	\$153,550	\$0	100.00%
4.06 Postage, Printing & Advertising					



Measure S Bond Program
Financial Report for May 2022
Budget vs Actuals by School and Budget Category with Vendor Detail

QSS Data thru 5/31/2022

	Budget	Contracted to Date	Expended to Date	Quarterly Expense Apr '22 - Jun '22	% Expended
UNCOMMITTED	\$0	\$0	\$0	\$0	
AMERICAN REPROGRAPHICS CO LLC	\$14,000	\$14,000	\$6,489	\$6,352	46.35%
SOUTHERN CALIFORNIA NEWS GROUP	\$3,873	\$3,873	\$2,510	\$2,510	64.81%
	\$17,873	\$17,873	\$8,999	\$8,862	50.35%
4.09 Relocation					
UNCOMMITTED	\$450	\$0	\$0	\$0	
Beltmann Group, Inc.	\$20,627	\$20,627	\$6,519	\$0	31.60%
CDW GOVERNMENT INC	\$1,312	\$1,312	\$1,312	\$0	100.00%
ULINE INC	\$800	\$800	\$0	\$0	0.00%
	\$23,189	\$22,738	\$7,830	\$0	33.77%
4.11 Preliminary Testing (Hazmat, Topo, Geo, etc)					
UNCOMMITTED	\$36,328	\$0	\$0	\$0	
CANNON CORPORATION	\$50,000	\$50,000	\$35,076	\$0	70.15%
ENVIRONMENTAL NETWORK CORPORATION	\$15,380	\$15,380	\$6,350	\$0	41.29%
NINYO & MOORE	\$20,955	\$20,955	\$20,955	\$0	100.00%
	\$122,663	\$86,335	\$62,381	\$0	50.86%
Total 392-9520 Orange HS Phase II (DSA 04-120151)	\$2,679,410	\$2,519,096	\$1,552,408	\$44,611	57.94%
392-TBD Orange HS Science Center Unallocated Funds F22					
5. Unallocated Bond Funds					
5.04 Unallocated Bond Funds					
UNCOMMITTED	\$1,520,780	\$0	\$0	\$0	
	\$1,520,780	\$0	\$0	\$0	0.00%
Total 392-TBD Orange HS Science Center Unallocated Funds F22	\$1,520,780	\$0	\$0	\$0	0.00%
392-9520 Orange HS Unallocated Funds F21					
5. Program Reserve					
5.03 Interest Earned - Reserve					
UNCOMMITTED	\$1,500,631	\$0	\$0	\$0	
	\$1,500,631	\$0	\$0	\$0	0.00%
4. Construction Support Costs					
4.15 Miscellaneous Fees					
UNCOMMITTED	\$0	\$0	\$0	\$0	
OUSD COST OF INTEREST DISTRIBUTION	\$49,221	\$49,221	\$49,221	\$0	100.00%
	\$49,221	\$49,221	\$49,221	\$0	100.00%
Total 392-9520 Orange HS Unallocated Funds F21	\$1,549,853	\$49,221	\$49,221	\$0	3.18%



Measure S Bond Program
Financial Report for May 2022
Budget vs Actuals by School and Budget Category with Vendor Detail

QSS Data thru 5/31/2022

	Budget	Contracted to Date	Expended to Date	Quarterly Expense Apr '22 - Jun '22	% Expended
392-TBD Orange HS Unallocated Funds F22					
5. Unallocated Bond Funds					
5.04 Unallocated Bond Funds					
UNCOMMITTED	\$17,978,844	\$0	\$0	\$0	
	\$17,978,844	\$0	\$0	\$0	0.00%
Total 392-TBD Orange HS Unallocated Funds F22	\$17,978,844	\$0	\$0	\$0	0.00%
Orange High School	\$73,549,853	\$45,060,927	\$43,794,996	\$53,389	59.54%
Villa Park High School					
394-0000 Villa Park HS IP Surveillance Camera and Systems					
4. Construction Support Costs					
4.13 FF&E (Laboratory Tables and Chairs, other)					
UNCOMMITTED	\$0	\$0	\$0	\$0	
CDW GOVERNMENT INC	\$32,182	\$32,182	\$32,182	\$0	100.00%
DIGITAL NETWORKS GROUP INC (F/I IP Camera Software)	\$8,635	\$8,635	\$8,635	\$0	100.00%
INTER-PACIFIC INC	\$22,133	\$22,133	\$22,133	\$0	100.00%
	\$62,949	\$62,949	\$62,949	\$0	100.00%
Total 394-0000 Villa Park HS IP Surveillance Camera and Systems	\$62,949	\$62,949	\$62,949	\$0	100.00%
394-9520 Villa Park HS Science Center (DSA 04-117022)					
1. Design Cost					
1.01 Architect					
UNCOMMITTED	\$48,583	\$0	\$0	\$0	
DKS ASSOCIATES	\$85,690	\$85,690	\$80,657	\$0	94.13%
LIONAKIS	\$14,059	\$14,059	\$14,059	\$0	100.00%
LPA INC	\$2,637,692	\$2,637,692	\$2,495,409	\$20,653	94.61%
	\$2,786,024	\$2,737,441	\$2,590,125	\$20,653	92.97%
2. Construction Cost					
2.01 Construction					
UNCOMMITTED	\$1	\$0	\$0	\$0	
ANGELES CONTRACTOR, INC	\$20,775,659	\$20,775,659	\$19,865,514	\$0	95.62%
	\$20,775,660	\$20,775,659	\$19,865,514	\$0	95.62%
2.02 OFCI and Other Construction					
UNCOMMITTED	\$92,829	\$0	\$0	\$0	
ACCO ENGINEERED SYSTEMS INC	\$150,829	\$150,829	\$150,829	\$0	100.00%
AMERICAN REPROGRAPHICS CO LLC	\$1,026	\$1,026	\$0	\$0	0.00%
ANIXTER	\$7,312	\$7,312	\$0	\$0	0.00%



**Measure S Bond Program
Financial Report for May 2022
Budget vs Actuals by School and Budget Category with Vendor Detail**

QSS Data thru 5/31/2022

	Budget	Contracted to Date	Expended to Date	Quarterly Expense Apr '22 - Jun '22	% Expended
ARROW RESTAURANT EQUIPMENT	\$13,887	\$13,887	\$13,869	\$0	99.86%
CAROLINA BIOLOGICAL SUPPLY	\$24,213	\$24,213	\$20,052	\$1,535	82.82%
DEVELOPMENT GROUP INC	\$52,939	\$52,939	\$52,937	\$0	100.00%
FISHER SCIENCE EDUCATION	\$25,951	\$25,951	\$25,951	\$0	100.00%
FLINN SCIENTIFIC INC	\$12,364	\$12,364	\$12,364	\$0	100.00%
WW GRAINGER INC	\$4,617	\$4,617	\$4,617	\$1,932	100.00%
	\$385,967	\$293,138	\$280,619	\$3,468	72.71%
3. Program and Construction Management					
3.01 Program Management Fees					
UNCOMMITTED	\$120,084	\$0	\$0	\$0	
CORDOBA CORPORATION	\$0	\$0	\$0	\$0	
CUMMING CONSTRUCTION MGMT INC	\$945,697	\$1,044,109	\$923,995	\$10,006	97.71%
	\$1,065,781	\$1,044,109	\$923,995	\$10,006	86.70%
3.02 Construction Management Fees					
UNCOMMITTED	\$7,219	\$0	\$0	\$0	
CORDOBA CORPORATION	\$2,316,041	\$2,316,041	\$2,303,713	\$42,420	99.47%
	\$2,323,260	\$2,316,041	\$2,303,713	\$42,420	99.16%
4. Construction Support Costs					
4.02 Title, Environmental, Stormwater Management					
UNCOMMITTED	\$0	\$0	\$0	\$0	
CHICAGO TITLE COMPANY	\$750	\$750	\$750	\$0	100.00%
OUSD COST OF INTEREST DISTRIBUTION	\$1	\$1	\$1	\$0	100.00%
PLACEWORKS INC	\$73,237	\$73,237	\$73,237	\$0	100.00%
STATE WATER RESOURCES CONTROL BOARD (SWRCB)	\$484	\$484	\$484	\$0	100.00%
	\$74,471	\$74,471	\$74,471	\$0	100.00%
4.03 Commissioning					
UNCOMMITTED	\$9,722	\$0	\$0	\$0	
P2S ENGINEERING INC	\$31,635	\$31,635	\$27,974	\$1,286	88.43%
	\$41,357	\$31,635	\$27,974	\$1,286	67.64%
4.05 DSA Review Fees					
UNCOMMITTED	\$118,838	\$0	\$0	\$0	
DIVISION OF STATE ARCHITECT	\$289,250	\$289,250	\$289,250	\$0	100.00%
	\$408,088	\$289,250	\$289,250	\$0	70.88%
4.06 Postage, Printing & Advertising					
UNCOMMITTED	\$0	\$0	\$0	\$0	
AMERICAN REPROGRAPHICS CO LLC	\$16,315	\$16,315	\$12,670	\$0	77.66%
SOUTHERN CALIFORNIA NEWS GROUP	\$1,768	\$1,768	\$1,768	\$0	100.00%
	\$18,083	\$18,083	\$14,438	\$0	79.85%
4.07 DSA Inspection (IOR)					



Measure S Bond Program
Financial Report for May 2022
Budget vs Actuals by School and Budget Category with Vendor Detail

QSS Data thru 5/31/2022

	Budget	Contracted to Date	Expended to Date	Quarterly Expense Apr '22 - Jun '22	% Expended
UNCOMMITTED	\$1	\$0	\$0	\$0	
BPI INSPECTION SERVICE	\$606,215	\$606,215	\$602,404	\$22,158	99.37%
	\$606,216	\$606,215	\$602,404	\$22,158	99.37%
4.08 DSA Construction Phase Testing (LOR)					
UNCOMMITTED	\$0	\$0	\$0	\$0	
NINYO & MOORE	\$909,474	\$909,474	\$901,213	\$0	99.09%
	\$909,474	\$909,474	\$901,213	\$0	99.09%
4.09 Relocation					
UNCOMMITTED	\$15,958	\$0	\$0	\$0	
Beltmann Group, Inc.	\$7,080	\$7,080	\$4,748	\$0	67.07%
ULINE INC	\$1,602	\$1,602	\$1,203	\$0	75.11%
	\$24,640	\$8,682	\$5,952	\$0	24.15%
4.11 Preliminary Testing (Hazmat, Topo, Geo, etc)					
UNCOMMITTED	\$1,727	\$0	\$0	\$0	
CALIFORNIA GEOLOGICAL SURVEY (Geology and Seismology Review)	\$3,600	\$3,600	\$3,600	\$0	100.00%
ENVIRONMENTAL NETWORK CORPORATION	\$19,145	\$19,145	\$19,085	\$0	99.69%
LEIGHTON CONSULTING INC (Geotechnical Engineering)	\$20,000	\$20,000	\$16,549	\$0	82.75%
PSOMAS	\$27,000	\$27,000	\$21,034	\$0	77.90%
RMA GROUP (dba SITESCAN)	\$53,125	\$53,125	\$44,890	\$0	84.50%
SPECTRUM FIRE PROTECTION (Fire Hydrant Flow Test)	\$1,000	\$1,000	\$1,000	\$0	100.00%
	\$125,597	\$123,870	\$106,158	\$0	84.52%
4.12 Utility Connection Fees (Local Permits)					
UNCOMMITTED	\$27,502	\$0	\$0	\$0	
SOUTHERN CALIFORNIA EDISON	\$400	\$400	\$400	\$0	100.00%
STATE WATER RESOURCES CONTROL BOARD (SWRCB)	\$3,707	\$3,707	\$3,707	\$600	100.00%
	\$31,609	\$4,107	\$4,107	\$600	12.99%
4.13 FF&E (Laboratory Tables and Chairs, other)					
UNCOMMITTED	\$56,129	\$0	\$0	\$0	
AMS.NET	\$3,754	\$3,754	\$3,754	\$0	100.00%
CDW GOVERNMENT INC	\$60,309	\$60,309	\$60,305	\$0	99.99%
CULVER-NEWLIN INC	\$12,359	\$12,359	\$12,359	\$0	100.00%
FLINN SCIENTIFIC INC	\$4,162	\$4,162	\$4,162	\$0	100.00%
INTER-PACIFIC INC	\$7,325	\$7,325	\$7,325	\$0	100.00%
PERFORMANCE HEALTH SUPPLY (DBA MEDCO)	\$2,065	\$2,065	\$2,065	\$0	100.00%
SIERRA SCHOOL EQUIPMENT COMPANY	\$502,500	\$502,500	\$502,500	\$0	100.00%
TIME & ALARM SYSTEMS	\$6,616	\$6,616	\$0	\$0	0.00%
TURTLE STORAGE dba AMERICAN BICYCLE CO	\$6,871	\$6,871	\$6,871	\$0	100.00%
VWR INTERNATIONAL LLC	\$47,922	\$52,714	\$47,922	\$0	100.00%
	\$710,011	\$658,674	\$647,262	\$0	91.16%



Measure S Bond Program
Financial Report for May 2022
Budget vs Actuals by School and Budget Category with Vendor Detail

QSS Data thru 5/31/2022

	Budget	Contracted to Date	Expended to Date	Quarterly Expense Apr '22 - Jun '22	% Expended
5. Contingency					
5.01 Construction Contingency					
UNCOMMITTED	\$731,383	\$0	\$0	\$0	
	\$731,383	\$0	\$0	\$0	0.00%
5.02 Project Contingency					
UNCOMMITTED	\$7,072,001	\$0	\$0	\$0	
	\$7,072,001	\$0	\$0	\$0	0.00%
Total 394-9520 Villa Park HS Science Center (DSA 04-117022)	\$38,089,622	\$29,890,848	\$28,637,196	\$100,591	75.18%
394-9520 Villa Park HS Interim Housing (DSA 04-116788)					
1. Design Cost					
1.01 Architect					
UNCOMMITTED	\$0	\$0	\$0	\$0	
LPA INC	\$70,000	\$70,000	\$70,000	\$0	100.00%
	\$70,000	\$70,000	\$70,000	\$0	100.00%
2. Construction Cost					
2.01 Construction					
UNCOMMITTED	\$0	\$0	\$0	\$0	
ANGELES CONTRACTOR, INC	\$1,074,556	\$1,074,556	\$1,074,556	\$0	100.00%
	\$1,074,556	\$1,074,556	\$1,074,556	\$0	100.00%
2.02 OFCI and Other Construction					
UNCOMMITTED	\$0	\$0	\$0	\$0	
ACCO ENGINEERED SYSTEMS INC	\$36,527	\$36,527	\$36,527	\$0	100.00%
	\$36,527	\$36,527	\$36,527	\$0	100.00%
4. Construction Support Costs					
4.01 Rental					
UNCOMMITTED	\$0	\$0	\$0	\$0	
ELITE MODULAR LEASING & SALES INC	\$690,571	\$690,571	\$622,971	\$0	90.21%
	\$690,571	\$690,571	\$622,971	\$0	90.21%
4.05 DSA Review Fees					
UNCOMMITTED	\$0	\$0	\$0	\$0	
DIVISION OF STATE ARCHITECT	\$24,163	\$24,163	\$24,163	\$0	100.00%
	\$24,163	\$24,163	\$24,163	\$0	100.00%
4.07 DSA Inspection (IOR)					
UNCOMMITTED	\$0	\$0	\$0	\$0	
BPI INSPECTION SERVICE	\$43,265	\$43,265	\$43,265	\$0	100.00%
	\$43,265	\$43,265	\$43,265	\$0	100.00%
4.08 DSA Construction Phase Testing (LOR)					



Measure S Bond Program
Financial Report for May 2022
Budget vs Actuals by School and Budget Category with Vendor Detail

QSS Data thru 5/31/2022

	Budget	Contracted to Date	Expended to Date	Quarterly Expense Apr '22 - Jun '22	% Expended
UNCOMMITTED	\$0	\$0	\$0	\$0	
NINYO & MOORE	\$41,908	\$41,908	\$41,908	\$0	100.00%
	\$41,908	\$41,908	\$41,908	\$0	100.00%
4.09 Relocation					
UNCOMMITTED	\$0	\$0	\$0	\$0	
Beltmann Group, Inc.	\$4,640	\$4,640	\$4,640	\$0	100.00%
	\$4,640	\$4,640	\$4,640	\$0	100.00%
Total 394-9520 Villa Park HS Interim Housing (DSA 04-116788)					
	\$1,985,629	\$1,985,629	\$1,918,029	\$0	96.60%
394-9520 Villa Park HS Parking and Drop Off (DSA 04-118521)					
1. Design Cost					
1.01 Architect					
UNCOMMITTED	\$0	\$0	\$0	\$0	
LPA INC	\$107,305	\$107,305	\$59,506	\$0	55.45%
	\$107,305	\$107,305	\$59,506	\$0	55.45%
2. Construction Cost					
2.01 Construction					
UNCOMMITTED	\$0	\$0	\$0	\$0	
ANGELES CONTRACTOR, INC	\$2,700,000	\$2,700,000	\$2,594,435	\$0	96.09%
	\$2,700,000	\$2,700,000	\$2,594,435	\$0	96.09%
2.02 OFCI and Other Construction					
UNCOMMITTED	\$0	\$0	\$0	\$0	
WW GRAINGER INC	\$1,536	\$1,536	\$1,536	\$0	100.00%
	\$1,536	\$1,536	\$1,536	\$0	100.00%
4. Construction Support Costs					
4.05 DSA Review Fees					
UNCOMMITTED	\$2,886	\$0	\$0	\$0	
DIVISION OF STATE ARCHITECT	\$38,262	\$38,262	\$38,262	\$0	100.00%
	\$41,147	\$38,262	\$38,262	\$0	92.99%
4.06 Postage, Printing & Advertising					
UNCOMMITTED	\$0	\$0	\$0	\$0	
AMERICAN REPROGRAPHICS CO LLC	\$476	\$476	\$476	\$0	100.00%
	\$476	\$476	\$476	\$0	100.00%
4.07 DSA Inspection (IOR)					
UNCOMMITTED	\$0	\$0	\$0	\$0	
BPI INSPECTION SERVICE	\$44,880	\$44,880	\$40,264	\$0	89.71%
	\$44,880	\$44,880	\$40,264	\$0	89.71%
4.08 DSA Construction Phase Testing (LOR)					



**Measure S Bond Program
Financial Report for May 2022
Budget vs Actuals by School and Budget Category with Vendor Detail**

QSS Data thru 5/31/2022

	Budget	Contracted to Date	Expended to Date	Quarterly Expense Apr '22 - Jun '22	% Expended
UNCOMMITTED	\$0	\$0	\$0	\$0	
NINYO & MOORE	\$83,024	\$83,024	\$75,273	\$0	90.66%
	\$83,024	\$83,024	\$75,273	\$0	90.66%
Total 394-9520 Villa Park HS Parking and Drop Off (DSA 04-118521)	\$2,978,369	\$2,975,483	\$2,809,752	\$0	94.34%
394-9520 Villa Park HS Phase II (DSA 04-119694)					
1. Design Cost					
1.01 Architect					
UNCOMMITTED	\$0	\$0	\$0	\$0	
LPA INC	\$1,877,000	\$1,877,000	\$1,238,371	\$4,406	65.98%
	\$1,877,000	\$1,877,000	\$1,238,371	\$4,406	65.98%
3. Program and Construction Management					
3.01 Program Management Fees					
UNCOMMITTED	\$188,752	\$0	\$0	\$0	
CUMMING CONSTRUCTION MGMT INC	\$201,241	\$201,241	\$100,845	\$5,818	50.11%
	\$389,993	\$201,241	\$100,845	\$5,818	25.86%
3.02 Construction Management Fees					
UNCOMMITTED	\$0	\$0	\$0	\$0	
CORDOBA CORPORATION	\$506,441	\$506,441	\$114,182	\$8,408	22.55%
	\$506,441	\$506,441	\$114,182	\$8,408	22.55%
4. Construction Support Costs					
4.02 Title, Environmental, Stormwater Management					
UNCOMMITTED	\$0	\$0	\$0	\$0	
ENVIRONMENTAL AUDIT INC	\$36,880	\$36,880	\$4,119	\$0	11.17%
	\$36,880	\$36,880	\$4,119	\$0	11.17%
4.03 Commissioning					
UNCOMMITTED	\$0	\$0	\$0	\$0	
P2S ENGINEERING INC	\$8,429	\$8,429	\$3,850	\$0	45.68%
	\$8,429	\$8,429	\$3,850	\$0	45.68%
4.05 DSA Review Fees					
UNCOMMITTED	\$0	\$0	\$0	\$0	
DIVISION OF STATE ARCHITECT	\$188,750	\$188,750	\$188,750	\$0	100.00%
	\$188,750	\$188,750	\$188,750	\$0	100.00%
4.06 Postage, Printing & Advertising					
UNCOMMITTED	\$0	\$0	\$0	\$0	
AMERICAN REPROGRAPHICS CO LLC	\$8,000	\$8,000	\$0	\$0	0.00%
SOUTHERN CALIFORNIA NEWS GROUP	\$3,000	\$3,000	\$0	\$0	0.00%
	\$11,000	\$11,000	\$0	\$0	0.00%



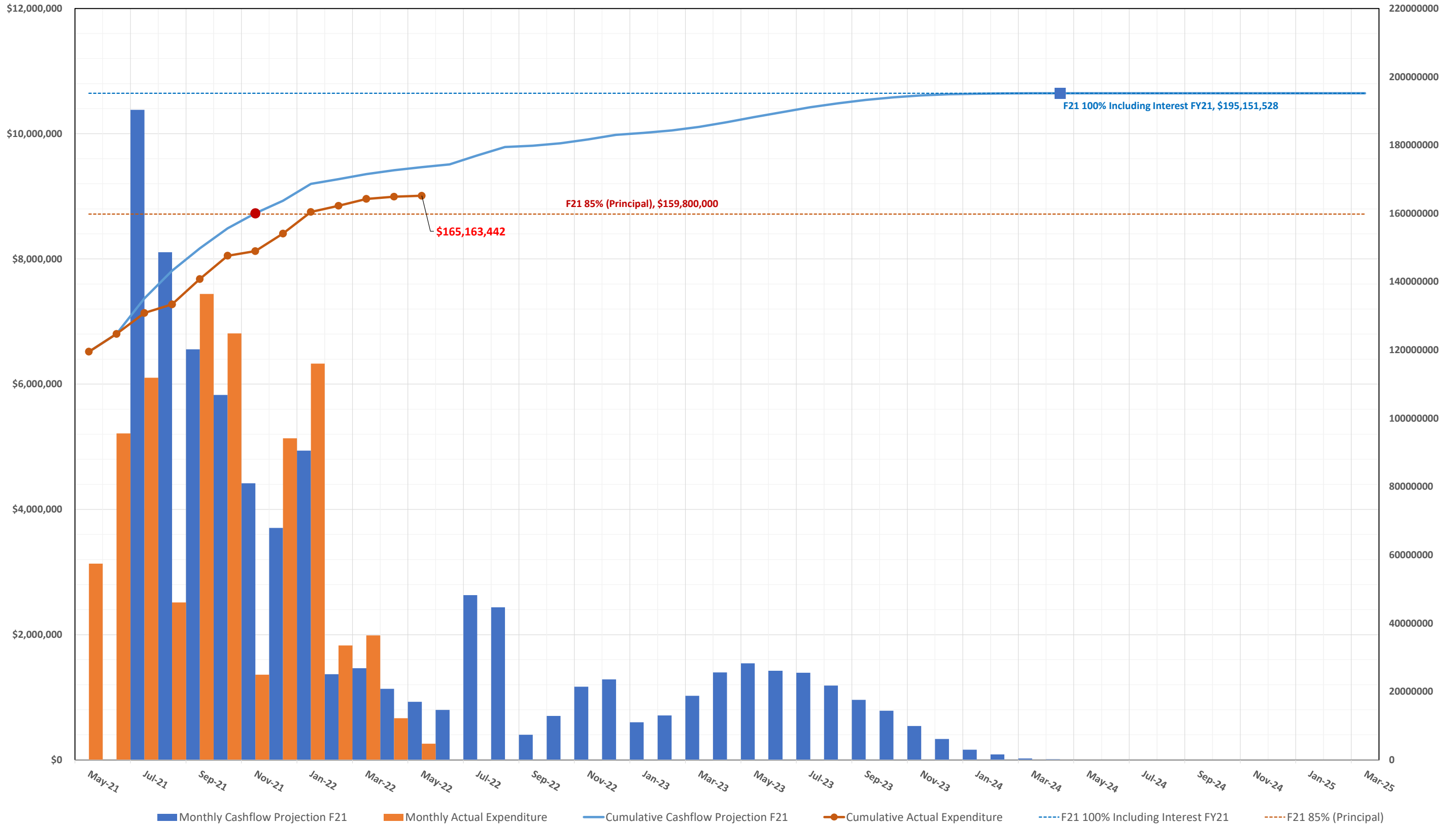
**Measure S Bond Program
Financial Report for May 2022
Budget vs Actuals by School and Budget Category with Vendor Detail**

QSS Data thru 5/31/2022

	Budget	Contracted to Date	Expended to Date	Quarterly Expense Apr '22 - Jun '22	% Expended
4.11 Preliminary Testing (Hazmat, Topo, Geo, etc)					
UNCOMMITTED	\$1,657	\$0	\$0	\$0	
ENVIRONMENTAL NETWORK CORPORATION	\$10,860	\$10,860	\$4,640	\$0	42.73%
NINYO & MOORE	\$58,576	\$58,576	\$53,223	\$0	90.86%
PSOMAS	\$26,550	\$26,550	\$26,550	\$0	100.00%
	\$97,643	\$95,986	\$84,413	\$0	86.45%
Total 394-9520 Villa Park HS Phase II (DSA 04-119694)	\$3,116,136	\$2,925,727	\$1,734,529	\$18,632	55.66%
394-TBD Villa Park HS Science Center Unallocated Funds F22					
5. Unallocated Bond Funds					
5.04 Unallocated Bond Funds					
UNCOMMITTED	\$1,192,646	\$0	\$0	\$0	
	\$1,192,646	\$0	\$0	\$0	0.00%
Total 394-TBD Villa Park HS Science Center Unallocated Funds F22	\$1,192,646	\$0	\$0	\$0	0.00%
394-9520 Villa Park Unallocated Funds F21					
4. Construction Support Costs					
4.15 Miscellaneous Fees					
UNCOMMITTED	\$0	\$0	\$0	\$0	
OUSD COST OF INTEREST DISTRIBUTION	\$48,488	\$48,488	\$48,488	\$0	100.00%
	\$48,488	\$48,488	\$48,488	\$0	100.00%
5. Program Reserve					
5.03 Interest Earned - Reserve					
UNCOMMITTED	\$690,921	\$0	\$0	\$0	
	\$690,921	\$0	\$0	\$0	0.00%
Total 394-9520 Villa Park Unallocated Funds F21	\$739,409	\$48,488	\$48,488	\$0	6.56%
394-TBD Villa Park Unallocated Funds F22					
5. Unallocated Bond Funds					
5.04 Unallocated Bond Funds					
UNCOMMITTED	\$25,538,287	\$0	\$0	\$0	
	\$25,538,287	\$0	\$0	\$0	0.00%
Total 394-TBD Villa Park Unallocated Funds F22	\$25,538,287	\$0	\$0	\$0	0.00%
Villa Park High School	\$73,703,048	\$37,889,126	\$35,210,943	\$119,223	47.77%

3.2 Cash Flow Projections

MEASURE S BOND PROGRAM - Series A 2018 CASH FLOW PROJECTION (Phase I and II)
 Actual Costs thru May 31, 2022, NOT INCLUDING ACCRUALS PENDING PAYMENT
 Fund 21 Planned Costs Projected as of June 30, 2021



4.0 PROGRAM SUMMARY SCHEDULE



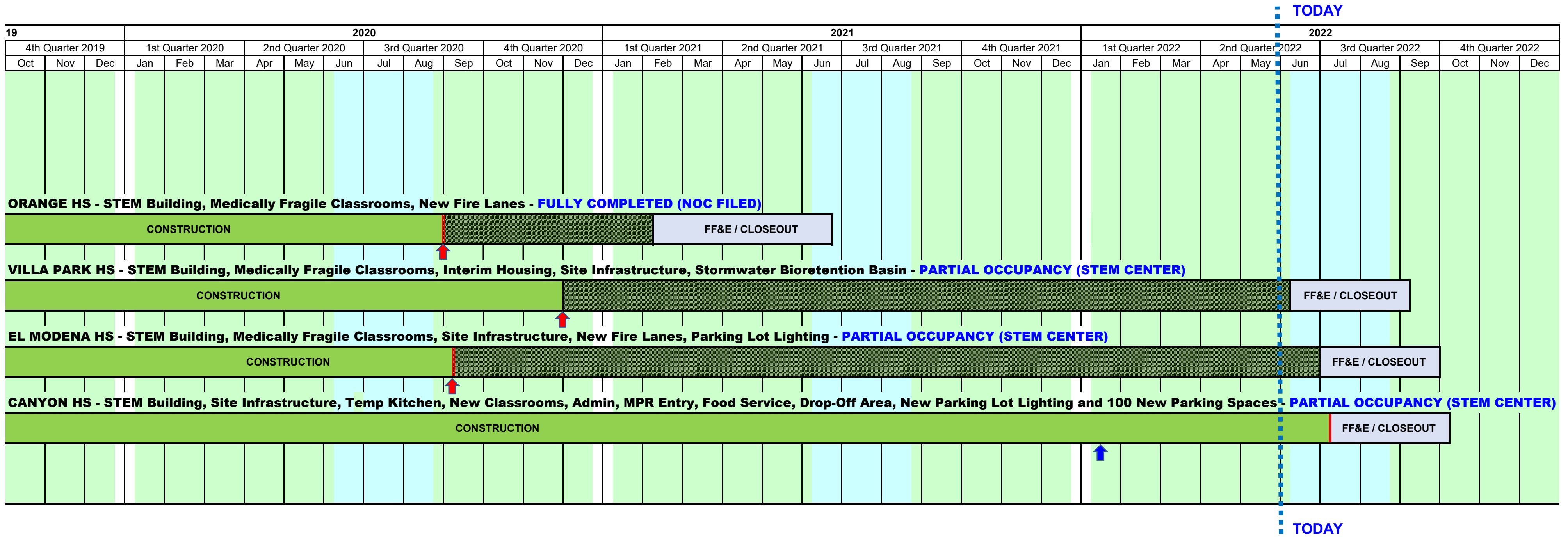
MEASURE S BOND PROGRAM - PHASE I: SCHEDULE SUMMARY

2016			2017												2018												2019									20
4th Quarter 2016			1st Quarter 2017			2nd Quarter 2017			3rd Quarter 2017			4th Quarter 2017			1st Quarter 2018			2nd Quarter 2018			3rd Quarter 2018			4th Quarter 2018			1st Quarter 2019			2nd Quarter 2019			3rd Quarter 2019			
Oct	Nov	Dec	Jan	Feb	Mar	Apr	May	Jun	Jul	Aug	Sep	Oct	Nov	Dec	Jan	Feb	Mar	Apr	May	Jun	Jul	Aug	Sep	Oct	Nov	Dec	Jan	Feb	Mar	Apr	May	Jun	Jul	Aug	Sep	
<div style="border: 1px solid black; padding: 2px; display: inline-block; background-color: #90EE90;"> BOND SALE SERIES A - \$188M </div>																																				
ORANGE HS - Site Infrastructure, Move Relocatable Buildings, Bus Drop-Off, Restroom Renovation & Satellite Kitchen - COMPLETED																																				
PROGRAM PHASE			DESIGN PHASE						DSA REVIEW & APPROVAL						BID & AWARD			INFRASTRUCTURE						SATELLITE KITCHEN CONSTRUCTION						FF&E/CLOSEOUT						
ORANGE HS - STEM Building, Medically Fragile Classrooms, New Fire Lanes - SUBSTANTIALLY COMPLETED (OCCUPIED)																																				
PROGRAM PHASE			DESIGN PHASE									DSA REVIEW & APPROVAL						BID & AWARD						CONSTRUCTION												
VILLA PARK HS - STEM Building, Medically Fragile Classrooms, Interim Housing, Site Infrastructure, Stormwater Bioretention Basin																																				
PROGRAM PHASE			DESIGN PHASE									DSA REVIEW & APPROVAL						BID & AWARD						CONSTRUCTION												
EL MODENA HS - STEM Building, Medically Fragile Classrooms, Site Infrastructure, New Fire Lanes, Parking Lot Lighting																																				
PROGRAM PHASE			DESIGN PHASE												DSA REVIEW & APPROVAL						BID & AWARD						CONSTRUCTION									
CANYON HS - STEM Building, Site Infrastructure, Temporary Kitchen, New Classrooms, Administration, MPR Entry, Food Service, Drop-Off Circulation,																																				
PROGRAM PHASE			DESIGN PHASE															DSA REVIEW & APPROVAL						BID & AWARD						CONSTRUCTION						

- Villa Park HS Schematic Design & Budget Board Approved 6/8/17
- Canyon HS Schematic Design & Budget Board Approved 5/25/17
- El Modena HS Schematic Design & Budget Board Approved 5/11/17
- Orange HS Schematic Design & Budget Board Approved 4/13/17
- Program Manager Starts Work 1/17/17
- Bond Measure S Passes by 62% on 11/8/16



MEASURE S BOND PROGRAM - PHASE I: SCHEDULE SUMMARY



- SUMMER BREAK
- There is a date under legal negotiation (see monthly report) that may extend this substantial completion date (*the dashed section is the extension under review*).
- There has been a Substantial Completion date change approved by the Board of Education (see under specific project for the Change Order # referenced).



MEASURE S BOND PROGRAM - PHASE II: SCHEDULE SUMMARY

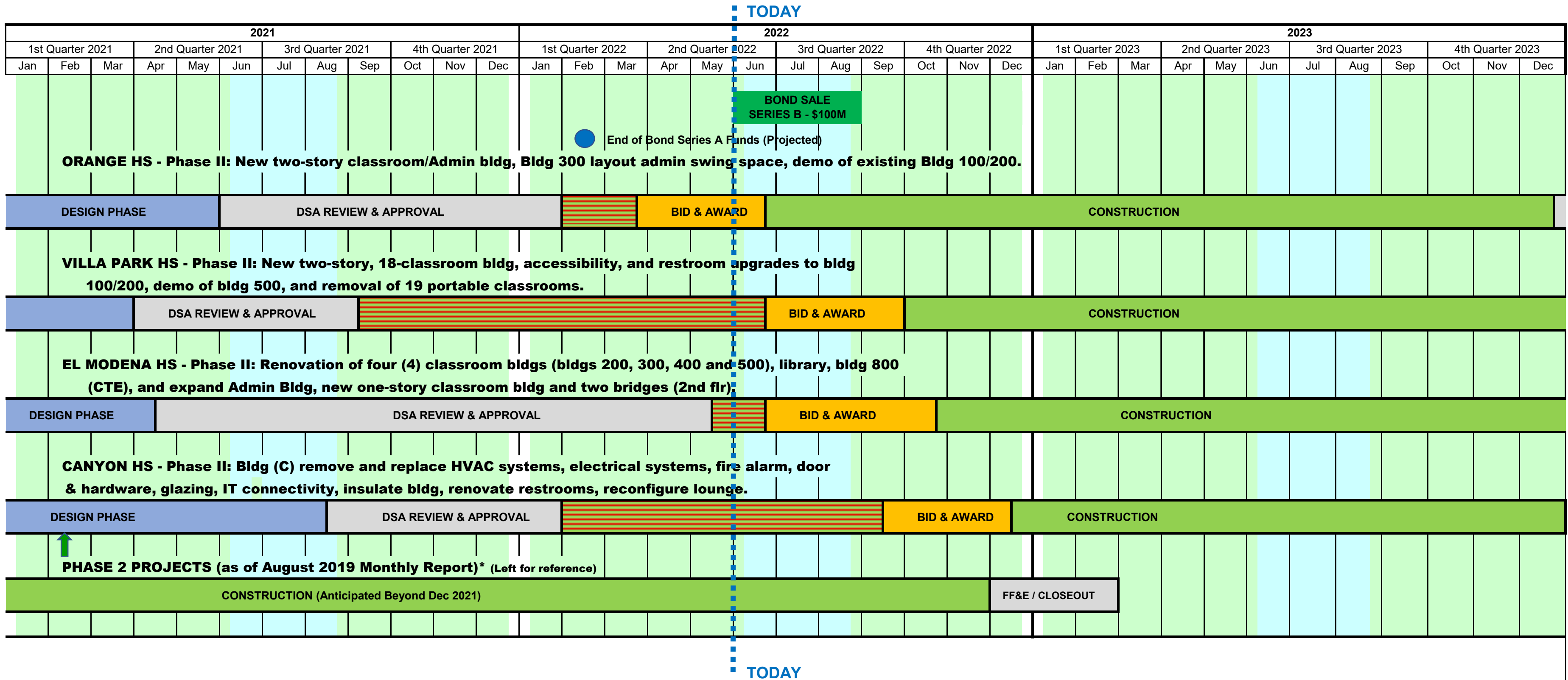
2018				2019												2020															
2018				1st Quarter 2019			2nd Quarter 2019			3rd Quarter 2019			4th Quarter 2019			1st Quarter 2020			2nd Quarter 2020			3rd Quarter 2020			4th Quarter 2020						
Jun	Jul	Aug	Sep	Oct	Nov	Dec	Jan	Feb	Mar	Apr	May	Jun	Jul	Aug	Sep	Oct	Nov	Dec	Jan	Feb	Mar	Apr	May	Jun	Jul	Aug	Sep	Oct	Nov	Dec	
<p>ORANGE HS - Phase II: New two-story classroom/Admin bldg, Bldg 300 layout admin swing space, demo of existing Bldg 100/200.</p>																															
PROGRAM PHASE				CONCEPTUAL DESIGN												DESIGN PHASE															
<p>VILLA PARK HS - Phase II: New two-story, 18-classroom bldg, accessibility, and restroom upgrades to bldg 100/200, demo of bldg 500, and removal of 19 portable classrooms.</p>																															
PROGRAM PHASE				CONCEPTUAL DESIGN												DESIGN PHASE															
<p>EL MODENA HS - Phase II: Renovation of four (4) classroom bldgs (bldgs 200, 300, 400 and 500), library, bldg 800 (CTE), and expand Admin Bldg, new one-story classroom bldg and two bridges (2nd flr).</p>																															
PROGRAM PHASE				CONCEPTUAL DESIGN												DESIGN PHASE															
<p>CANYON HS - Phase II: Bldg (C) remove and replace HVAC systems, electrical systems, fire alarm, door & hardware, glazing, IT connectivity, insulate bldg, renovate restrooms, reconfigure lounge.</p>																															
PROGRAM PHASE												CONCEPTUAL DESIGN			DESIGN PHASE																
<p>PHASE 2 PROJECTS (as of August 2019 Monthly Report)</p>																															
PROGRAM PHASE						CONCEPTUAL / DESIGN PHASE												DSA REVIEW & APPROVAL													

☐ — SUMMER BREAK

- Conceptual Design Board Approved 12/13/18
- Conceptual Design Board Approved 5/9/19 for Canyon HS
- Phase II Design & Budget Board Approved 7/25/19
- Orange HS
- El Modena HS
- Villa Park HS
- Canyon HS



MEASURE S BOND PROGRAM - PHASE II: SCHEDULE SUMMARY



TODAY

TODAY

- SUMMER BREAK
- EXTENDED CONSTRUCTION START (for Phase II Bond Award)

- Phase II Design Document & Construction Estimate Board Approval (Completed)
 - Orange HS - November 19, 2020 Board Meeting
 - El Modena HS - October 15, 2020 Board Meeting
 - Villa Park HS - August 13, 2020 Board Meeting
 - Canyon HS - February 11, 2021 Board Meeting

Board of Education

Andrea Yamasaki, President

Kris Erickson, Vice-President

Ana Page, Clerk

John Ortega

Kathryn A. Moffat

Angie Schlueter-Rumsey

Rick Ledesma

Gunn Marie Hansen, Ph.D.

Superintendent

David A. Rivera

Assistant Superintendent/CBO

Business Services

Scott Harvey

Senior Executive Director

Administrative Services



Facilities & Planning Department

Measure S Bond Program

726 W. Collins Avenue

Orange, CA 92867

T: (714) 628-4500